

**18719** **Mazzucchelli**

SILMO 2024

SILMO 2024

	CELLULOSE ACETATE	M49 BIOPLASTIC	
Respectful	<b>Efficiency</b>	Released	Upon request
	<b>Maverick</b>	Released	Upon request
	<b>Monocolors Silmo 2024 Dark Solid</b>	Monocolors Silmo 2024	-
	<b>M49-Monocolors Silmo 2024 Dark Solid</b>	-	M49-Monocolors Silmo 2024
	<b>Utah</b>	Released	Upon request
	<b>Woodland</b>	Released	Upon request
Creative Contrast	<b>Amberfall</b>	Released	Upon request
	<b>Gleam</b>	Released	Upon request
	<b>Monocolors Silmo 2024 Dark Transparent</b>	Monocolors Silmo 2024	-
	<b>M49-Monocolors Silmo 2024 Dark Transparent</b>	-	M49-Monocolors Silmo 2024
	<b>Quietly</b>	Released	Upon request
	<b>Riviera</b>	Released	Upon request
	<b>Sublime</b>	Released	Upon request
Feel Good	<b>Freedom</b>	Released	-
	<b>Funfair</b>	Released	Upon request
	<b>Monocolors Silmo 2024 Light Solid</b>	Monocolors Silmo 2024	-
	<b>M49-Monocolors Silmo 2024 Light Solid</b>	-	M49-Monocolors Silmo 2024
	<b>Neon Dreams</b>	Released	-



Respectful

RESPECTFUL

Guardarci intorno alla ricerca di oggetti e sensazioni che ci possano sostenere e spronare è ormai diventata una costante delle nostre giornate.

E ancora una volta il riferimento alla natura ci aiuta a trovare delle soluzioni.

È un magico connubio tra la sua versione più ancestrale e la sua visione più innovativa dal taglio tecnologico e scientifico.

Una questione di rispetto, prima di tutto di noi stessi e come conseguenza anche di tutto quello che ci circonda.

Rispetto delle persone e delle culture, rispetto dell'ambiente, rispetto del saper fare e rispetto degli oggetti che vengono pensati per essere multifunzionali e multigenerazionali, con una vita che va oltre alla singola stagione e pensati con una qualità premiante.

-

Aspetti rispettosi delle tradizioni che si rispecchiano nella scelta dei toni: colori senza tempo che spaziano dai caldi marroni all'oliva, fino ad arrivare ai blu e ai grigi. Senza dimenticare i bordeaux e il ruggine.

RESPECTFUL

Looking around for objects and sensations that can support and inspire us has become a constant in our daily lives.

Once again, nature serves as a reference to help us find solutions.

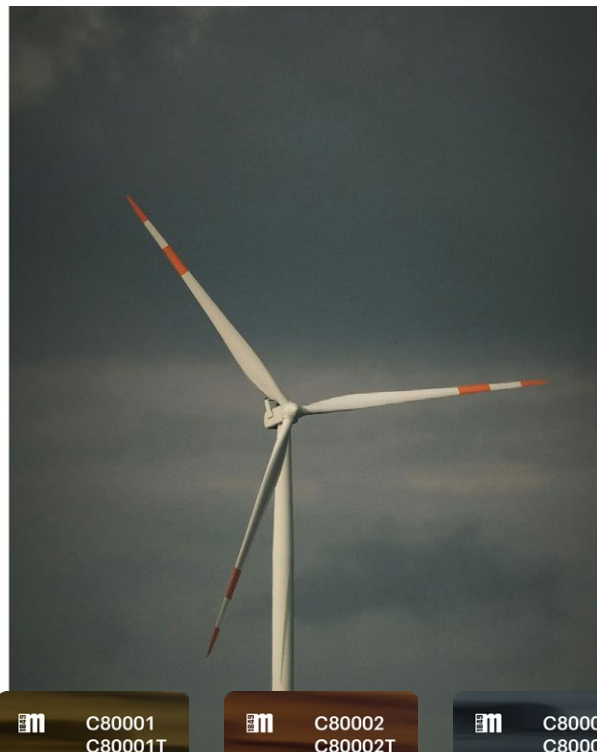
It's a magical blend of its most ancestral version and its most innovative vision, with a technological and scientific edge.

It's a matter of respect—first and foremost, respect for ourselves, which naturally extends to everything around us.

Respect for people and cultures, respect for the environment, respect for craftsmanship and respect for objects that are designed to be multifunctional and multigenerational, with a life that extends beyond a single season and is built with rewarding quality.

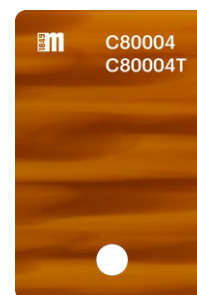
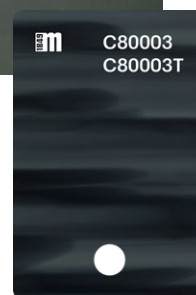
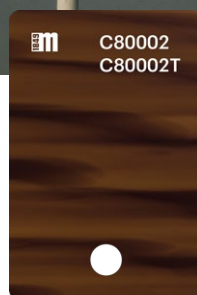
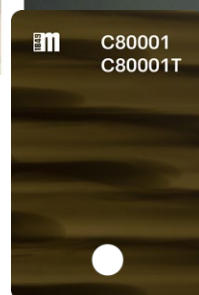
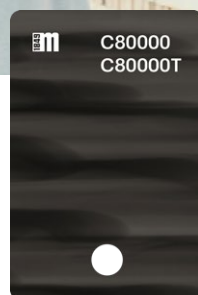
-

Respectful aspects of tradition are reflected in the choice of tones: timeless colors that range from warm browns to olive, and even to blues and greys, without forgetting burgundy and rust.



Un soffuso effetto avana arricchito da un leggero top trasparente .

–  
A soft havana effect enriched by a light transparent top.



Efficiency | M49-Efficiency

RESPECTFUL

**Mazzucchelli**



Efficiency | M49-Efficiency

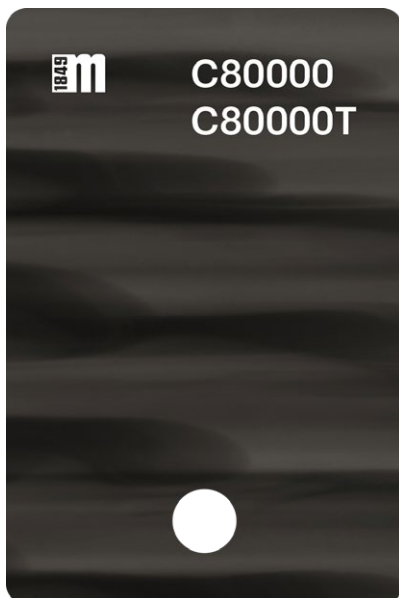
RESPECTFUL

**M49** Mazzucchelli



Efficiency | M49-Efficiency  
RESPECTFUL

**M49** Mazzucchelli



Front	Temple	Front	Temple	
C80000	C80000	C80000T	C80000T	carbon black
C80001	C80001	C80001T	C80001T	olive
C80002	C80002	C80002T	C80002T	neutral brown
C80003	C80003	C80003T	C80003T	frozen blue
C80004	C80004	C80004T	C80004T	new blonde
<b>ITALY</b>		<b>ASIA</b>		

Method of production:	<b>Extrusion</b>
Front size (mm):	<b>160 x 1400</b>
Temple size (mm):	<b>160 x 1400</b>
Front thickness (mm):	<b>Italy 8.0, 6.0 - Asia 6.0</b>
Temple thickness (mm):	<b>4.0</b>

Nature

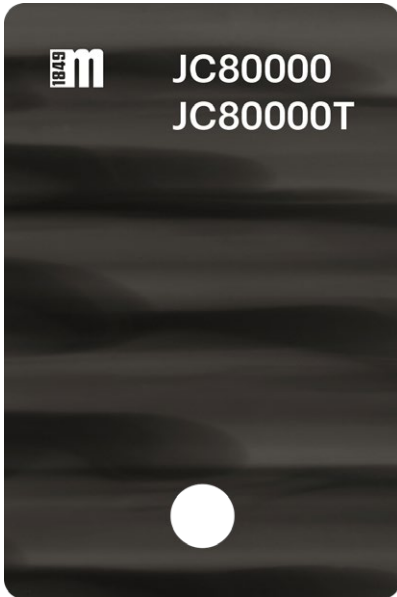
SILMO 2024

Efficiency

RESPECTFUL

**Mazzucchelli**





Front	Temple	Front	Temple	
JC80000	JC80000	JC80000T	JC80000T	carbon black
JC80001	JC80001	JC80001T	JC80001T	olive
JC80002	JC80002	JC80002T	JC80002T	neutral brown
JC80003	JC80003	JC80003T	JC80003T	frozen blue
JC80004	JC80004	JC80004T	JC80004T	new blonde
<b>ITALY</b>		<b>ASIA</b>		

Method of production:	<b>Extrusion</b>
Front size (mm):	<b>160 x 1400</b>
Temple size (mm):	<b>160 x 1400</b>
Front thickness (mm):	<b>Italy 8.0, 6.0 - Asia 6.0</b>
Temple thickness (mm):	<b>4.0</b>

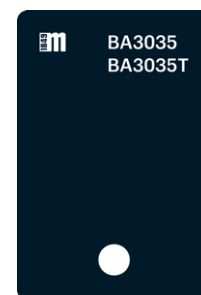
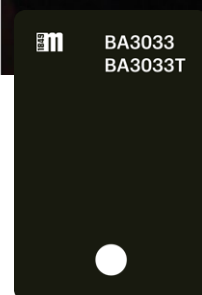
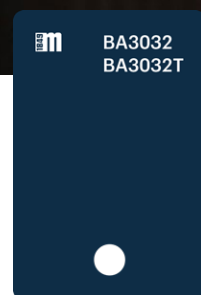
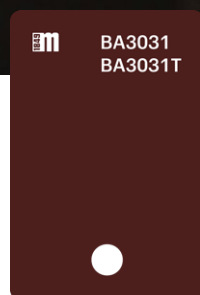
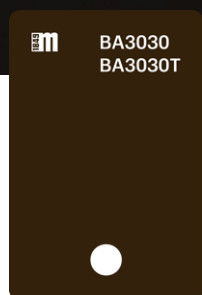
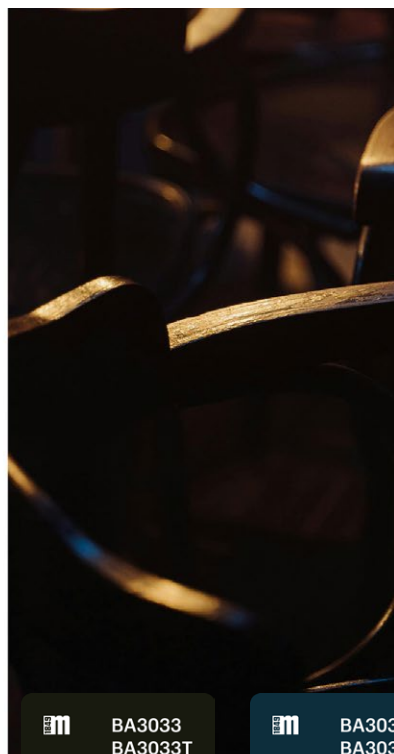
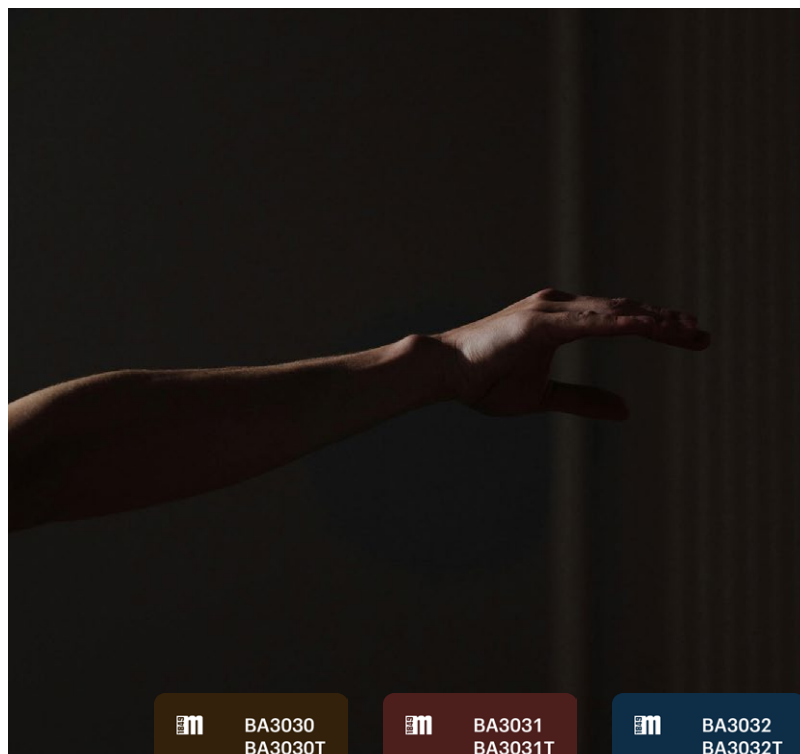
Nature

SILMO 2024

M49-Efficiency

RESPECTFUL

**Mazzucchelli**



Decisi colori opachi di base arricchiti da profondi top trasparenti.

–  
Bold solid base colors enriched by deep transparent tops.

# Maverick | M49-Maverick

RESPECTFUL

**Mazzucchelli**



Maverick | M49-Maverick

RESPECTFUL

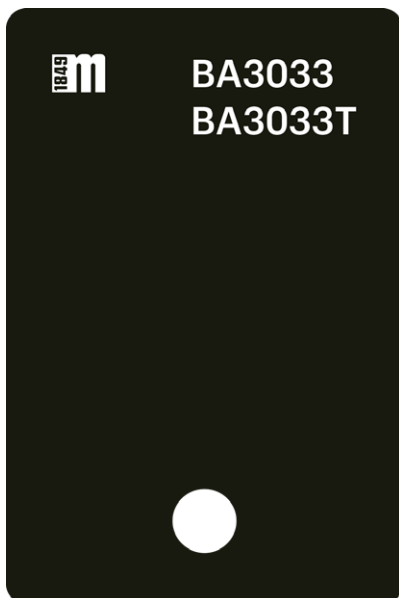
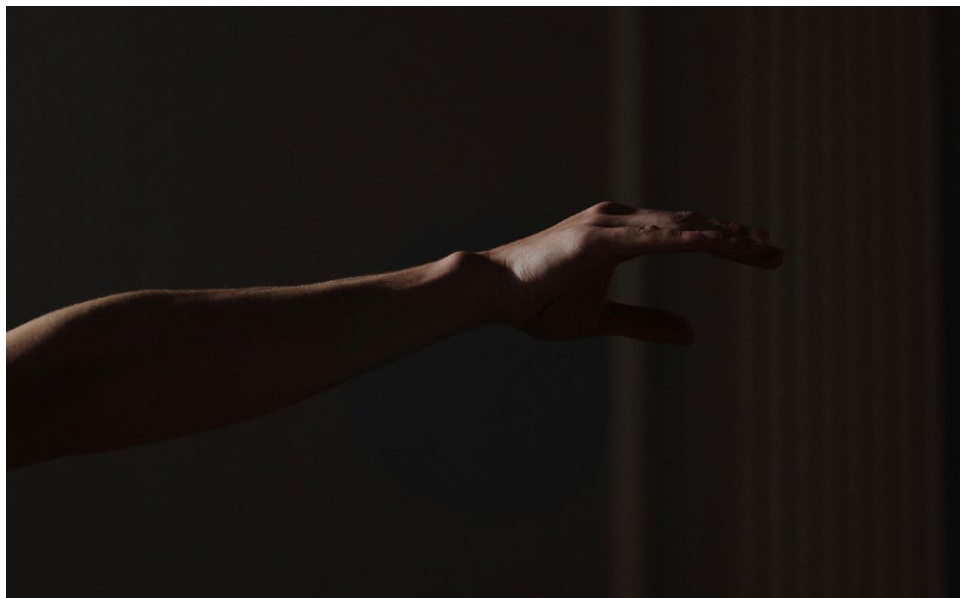
**Mazzucchelli**



Maverick | M49-Maverick

RESPECTFUL

**Mazzucchelli**

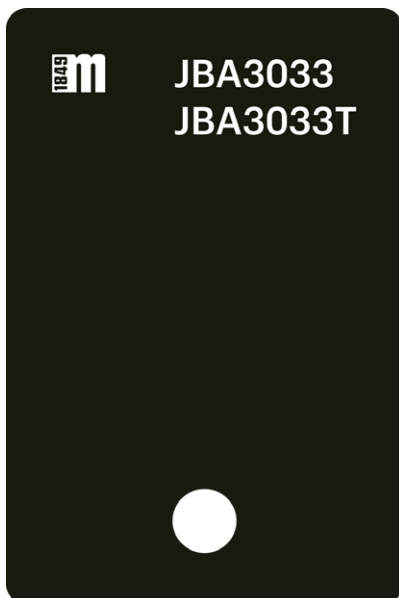
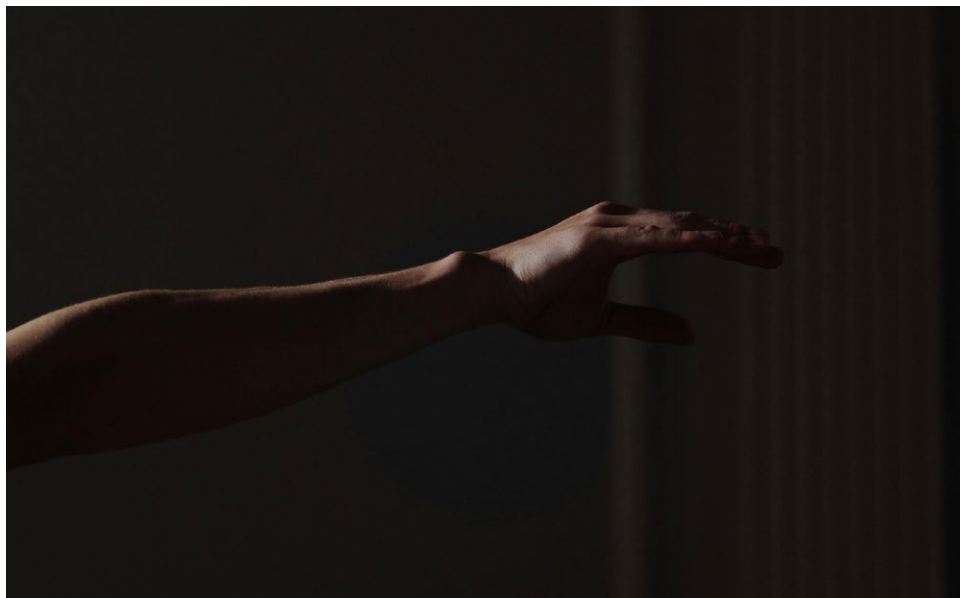


Front	Temple	Front	Temple	
BA3030	BA3030	BA3030T	BA3030T	apricot/black
BA3031	BA3031	BA3031T	BA3031T	caramel/bordeaux
BA3032	BA3032	BA3032T	BA3032T	powder blue/navy blue
BA3033	BA3033	BA3033T	BA3033T	garden green/tobacco brown
BA3034	BA3034	BA3034T	BA3034T	teal/navy blue
BA3035	BA3035	BA3035T	BA3035T	light grey/black
<b>ITALY</b>		<b>ASIA</b>		

Method of production:	<b>Extrusion</b>
Front size (mm):	<b>170 x 1400</b>
Temple size (mm):	<b>170 x 1400</b>
Front thickness (mm):	<b>Italy 8.0, 6.0 - Asia 6.0</b>
Temple thickness (mm):	<b>4.5</b>

Multilayers

SILMO 2024



Front	Temple	Front	Temple	
JBA3030	JBA3030	JBA3030T	JBA3030T	apricot/black
JBA3031	JBA3031	JBA3031T	JBA3031T	caramel/bordeaux
JBA3032	JBA3032	JBA3032T	JBA3032T	powder blue/navy blue
JBA3033	JBA3033	JBA3033T	JBA3033T	garden green/tobacco brown
JBA3034	JBA3034	JBA3034T	JBA3034T	teal/navy blue
JBA3035	JBA3035	JBA3035T	JBA3035T	light grey/black

**ITALY**

**ASIA**

Method of production:	<b>Extrusion</b>
Front size (mm):	<b>170 x 1400</b>
Temple size (mm):	<b>170 x 1400</b>
Front thickness (mm):	<b>Italy 8.0, 6.0 - Asia 6.0</b>
Temple thickness (mm):	<b>4.5</b>

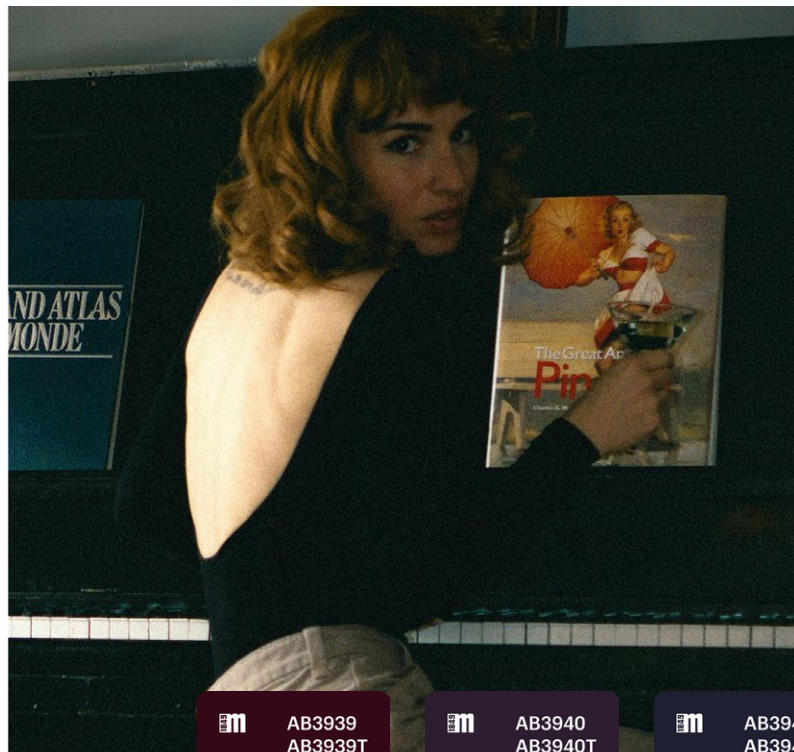
Multilayers

SILMO 2024

M49-Maverick

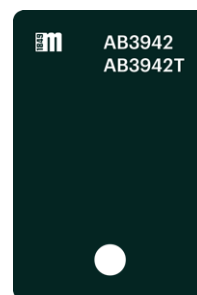
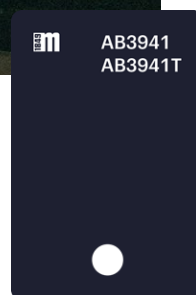
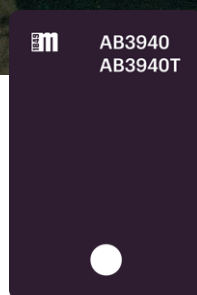
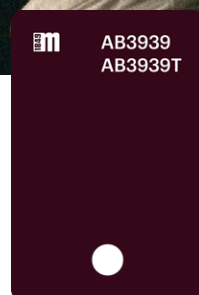
RESPECTFUL

**M49** Mazzucchelli



La versatilità dei toni scuri.

–  
The versatility of dark tones.



Monocolors Silmo 2024 Dark Solid  
M49-Monocolors Silmo 2024 Dark Solid

RESPECTFUL

**Mazzucchelli**



Monocolors Silmo 2024 Dark Solid  
M49-Monocolors Silmo 2024 Dark Solid

RESPECTFUL

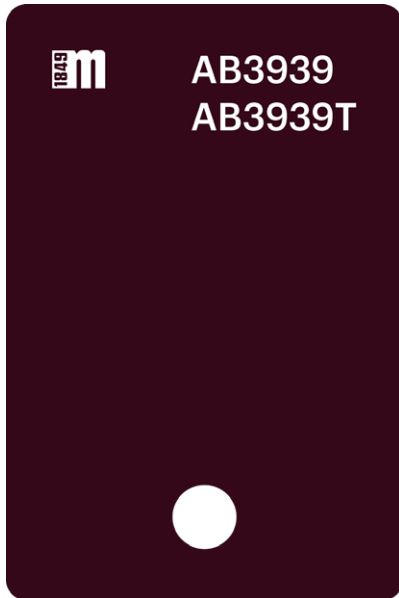




Monocolors Silmo 2024 Dark Solid  
M49-Monocolors Silmo 2024 Dark Solid

RESPECTFUL

**Mazzucchelli**



Front	Temple	Front	Temple	
AB3939	AB3939	AB3939T	AB3939T	solid burgundy
AB3940	AB3940	AB3940T	AB3940T	solid plum
AB3941	AB3941	AB3941T	AB3941T	solid grey blue
AB3942	AB3942	AB3942T	AB3942T	solid green
<b>ITALY</b>		<b>ASIA</b>		

Method of production:	<b>Extrusion</b>
Front size (mm):	<b>Italy 630 x 1430 [6.0], 170 x 1400 [8.0, 6.0] - Asia 170 x 1400 [6.0], 185 x 1425 [5.0]</b>
Temple size (mm):	<b>Italy 630 x 1430 [4.0, 3.0], 170 x 1400 [4.0] - Asia 170 x 1400 [4.0], 185 x 1425 [3.0]</b>
Front thickness (mm):	<b>Italy 8.0, 6.0 - Asia 6.0, 5.0</b>
Temple thickness (mm):	<b>Italy 4.0, 3.0 - Asia 4.0, 3.0</b>

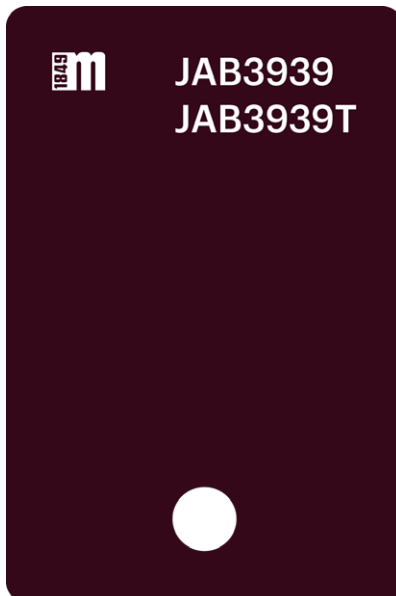
Mono Solid #monocolorcase

SILMO 2024

# Monocolors Silmo 2024 Dark Solid

RESPECTFUL

**Mazzucchelli**



Front	Temple	Front	Temple	
JAB3939	JAB3939	JAB3939T	JAB3939T	solid burgundy
JAB3940	JAB3940	JAB3940T	JAB3940T	solid plum
JAB3941	JAB3941	JAB3941T	JAB3941T	solid grey blue
JAB3942	JAB3942	JAB3942T	JAB3942T	solid green

ITALY

ASIA

Method of production: **Extrusion**

Front size (mm): **Italy 630 x 1430 [6.0], 170 x 1400 [8.0, 6.0] - Asia 170 x 1400 [6.0], 185 x 1425 [5.0]**

Temple size (mm): **Italy 630 x 1430 [4.0, 3.0], 170 x 1400 [4.0] - Asia 170 x 1400 [4.0], 185 x 1425 [3.0]**

Front thickness (mm): **Italy 8.0, 6.0 - Asia 6.0, 5.0**

Temple thickness (mm): **Italy 4.0, 3.0 - Asia 4.0, 3.0**

Mono Solid #monocolorcase

SILMO 2024

# M49-Monocolors Silmo 2024 Dark Solid

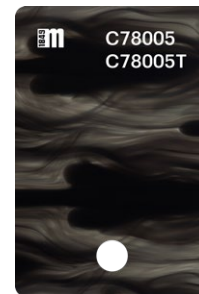
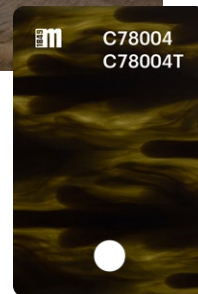
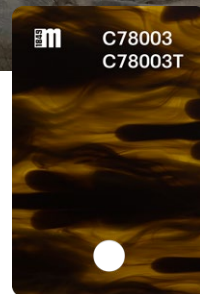
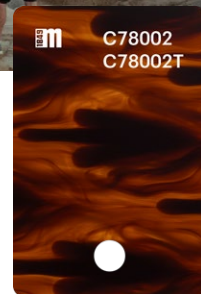
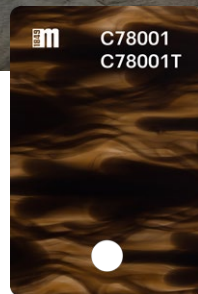
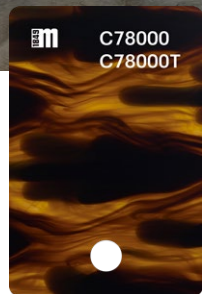
RESPECTFUL

**Mazzucchelli**



Onde di colori naturali danno vita a un effetto dal gusto classico.

– Waves of natural colors create a classic look.



Utah | M49-Utah

RESPECTFUL

**Mazucchelli**



Utah | M49-Utah

RESPECTFUL

**M49** Mazzucchelli



Utah | M49-Utah

RESPECTFUL

**M49** Mazzucchelli



Front	Temple	Front	Temple	
C78000	C78000	C78000T	C78000T	antique amber
C78001	C78001	C78001T	C78001T	deep taupe
C78002	C78002	C78002T	C78002T	reddish rust
C78003	C78003	C78003T	C78003T	oil yellow
C78004	C78004	C78004T	C78004T	olive green
C78005	C78005	C78005T	C78005T	pewter grey
<b>ITALY</b>		<b>ASIA</b>		

Method of production:	<b>Extrusion</b>
Front size (mm):	<b>Italy 180 x 1400 - Asia 170 x 1400</b>
Temple size (mm):	<b>Italy 180 x 1400 - Asia 170 x 1400</b>
Front thickness (mm):	<b>Italy 8.0, 6.0 - Asia 6.0</b>
Temple thickness (mm):	<b>4.0</b>

Nature

SILMO 2024



Front	Temple	Front	Temple	
JC78000	JC78000	JC78000T	JC78000T	antique amber
JC78001	JC78001	JC78001T	JC78001T	deep taupe
JC78002	JC78002	JC78002T	JC78002T	reddish rust
JC78003	JC78003	JC78003T	JC78003T	oil yellow
JC78004	JC78004	JC78004T	JC78004T	olive green
JC78005	JC78005	JC78005T	JC78005T	pewter grey
<b>ITALY</b>		<b>ASIA</b>		

Method of production:	<b>Extrusion</b>
Front size (mm):	<b>Italy 180 x 1400 – Asia 170 x 1400</b>
Temple size (mm):	<b>Italy 180 x 1400 – Asia 170 x 1400</b>
Front thickness (mm):	<b>Italy 8.0, 6.0 – Asia 6.0</b>
Temple thickness (mm):	<b>4.0</b>

Nature

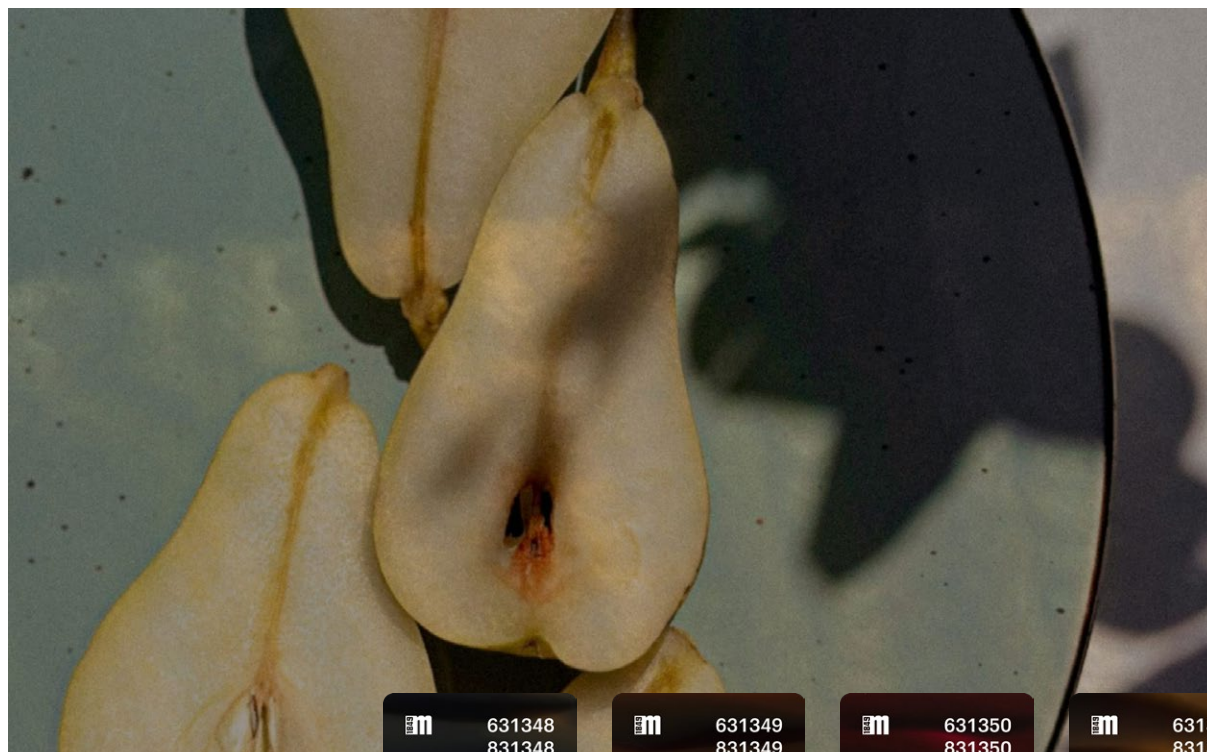
SILMO 2024

M49-Utah

RESPECTFUL

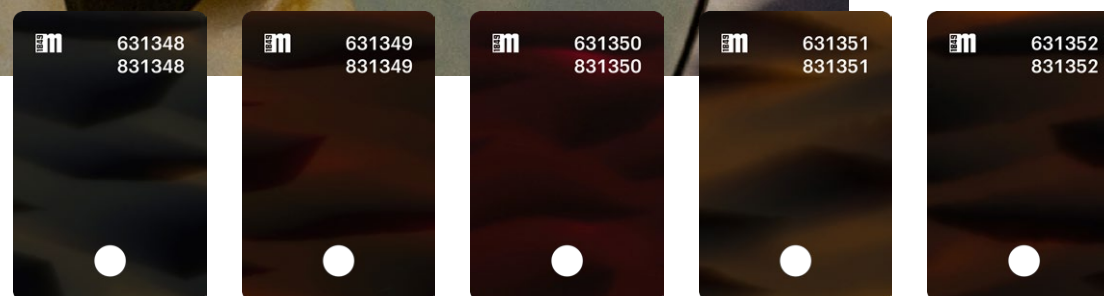
**Mazzucchelli**





L' eleganza di un pattern senza tempo.

-  
The elegance of a timeless pattern.



Woodland | M49-Woodland

RESPECTFUL

**Mazzucchelli**



Woodland | M49-Woodland

RESPECTFUL

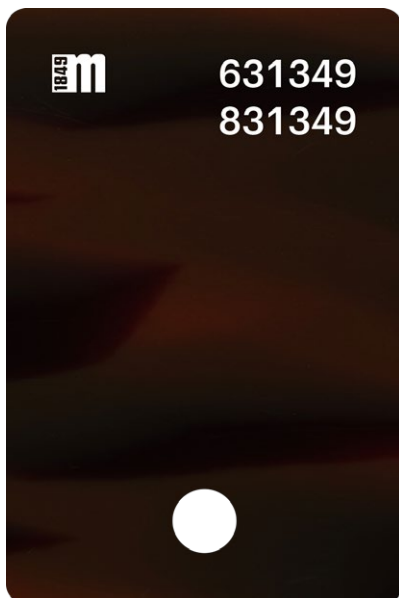
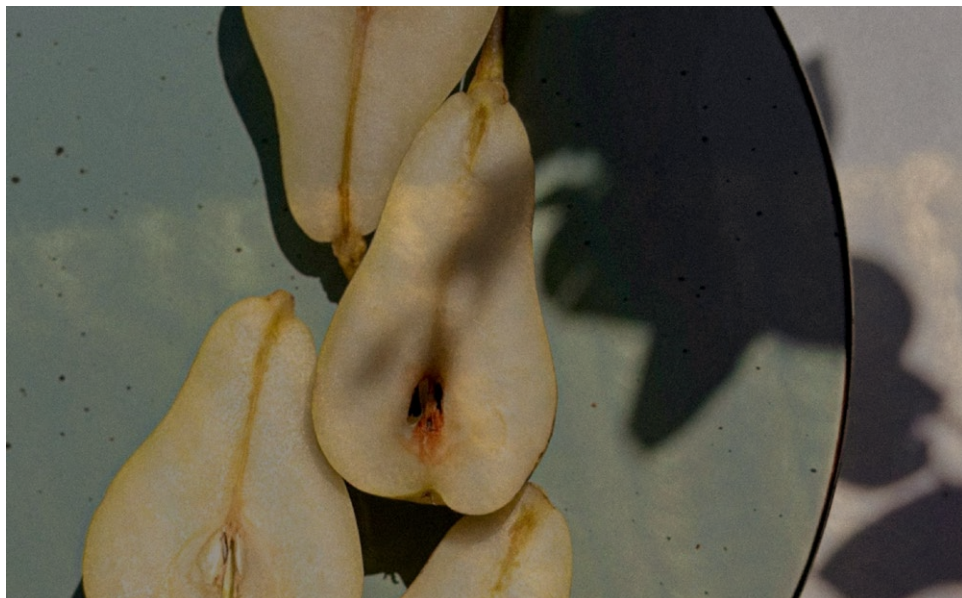
**Mazzucchelli**



Woodland | M49-Woodland

RESPECTFUL

**Mazzucchelli**

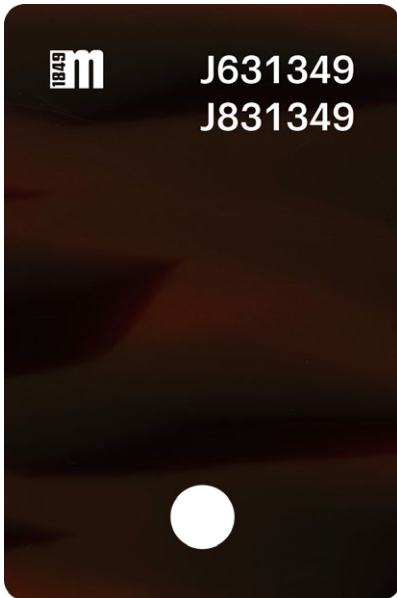


Front	Temple	Front	Temple	
631348	631348	831348	831348	flame orange
631349	631349	831349	831349	moss green
631350	631350	831350	831350	cordovan red
631351	631351	831351	831351	stone beige
631352	631352	831352	831352	mink brown
<b>ITALY</b>		<b>ASIA</b>		

Method of production:	<b>Block</b>
Front size (mm):	<b>600 x 1400</b>
Temple size (mm):	<b>600 x 1400</b>
Front thickness (mm):	<b>Italy 8.0, 6.0 - Asia 6.0</b>
Temple thickness (mm):	<b>4.0</b>

Tortoise/Nature

SILMO 2024



Front	Temple	Front	Temple	
J631348	J631348	J831348	J831348	flame orange
J631349	J631349	J831349	J831349	moss green
J631350	J631350	J831350	J831350	cordovan red
J631351	J631351	J831351	J831351	stone beige
J631352	J631352	J831352	J831352	mink brown
<b>ITALY</b>		<b>ASIA</b>		

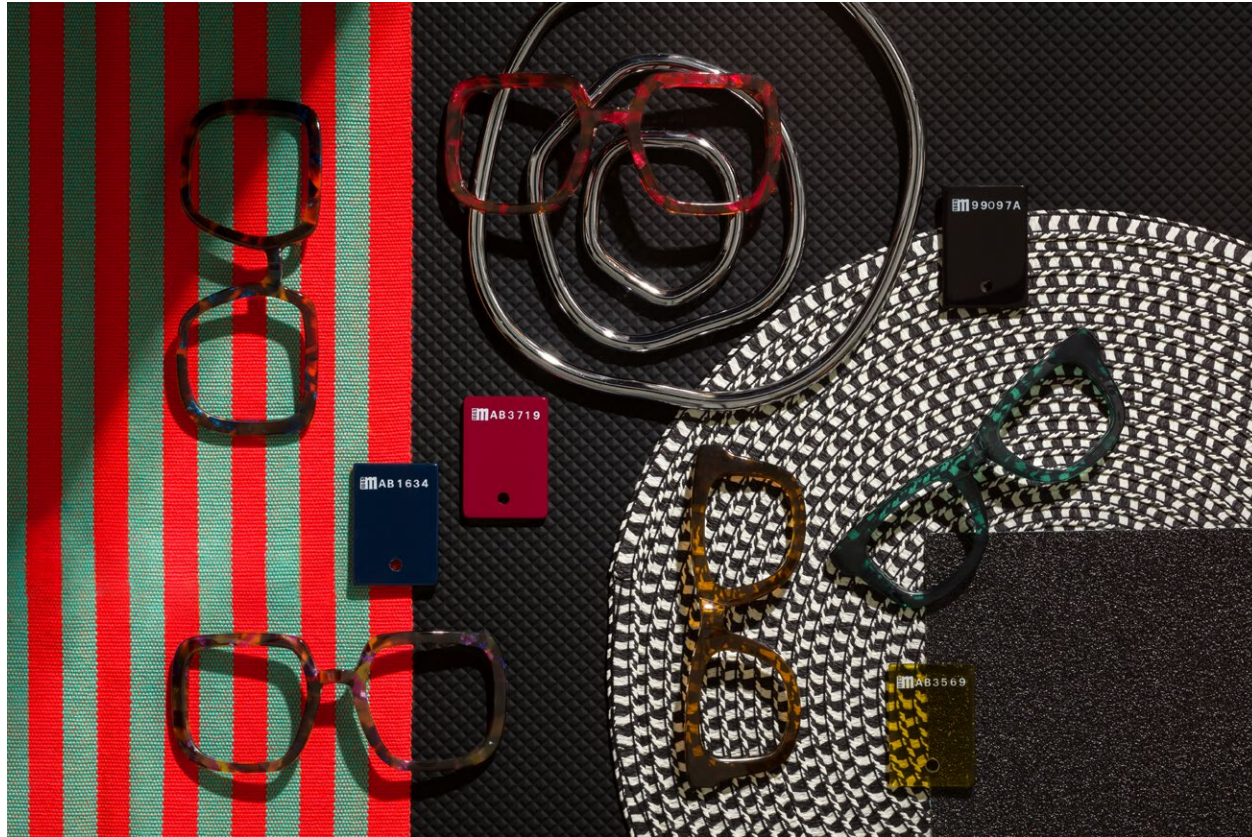
Method of production:	<b>Block</b>
Front size (mm):	<b>600 x 1400</b>
Temple size (mm):	<b>600 x 1400</b>
Front thickness (mm):	<b>Italy 8.0, 6.0 - Asia 6.0</b>
Temple thickness (mm):	<b>4.0</b>

Tortoise/Nature

SILMO 2024

# M49-Woodland

RESPECTFUL



Creative Contrast

CREATIVE CONTRAST

Un contrasto creativo tra toni scuri e profondi che assumono tutto un altro feeling grazie a pattern e colori dai tocchi accesi e teatrali.

Aspetti tenebrosi, interrotti da accenti che ne esaltano la personalità.

Senza mai dimenticare che individualità e diversità si mescolano con talento, per dare spazio a quella creatività capace di farci evadere dalla realtà e di portarci in uno spazio dove le differenze vengono celebrate.

-

Blu, viola, rossi e verdi dai riflessi notturni accompagnano neri dalle sfumature impercettibili.

CREATIVE CONTRAST

A creative contrast between dark, deep tones that take on an entirely different feeling thanks to patterns and colors with bright, theatrical touches.

Shadowy aspects interrupted by accents that highlight their personality.

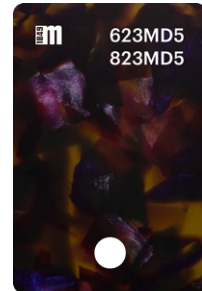
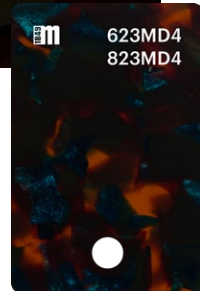
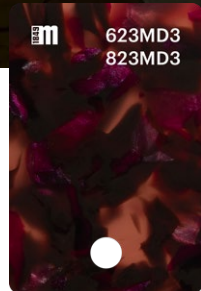
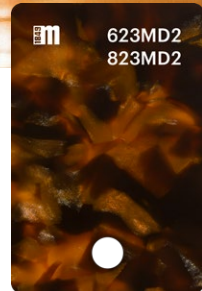
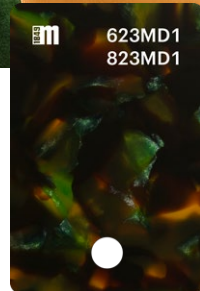
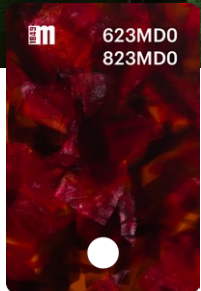
Never forgetting that individuality and diversity blend with talent, giving space to a creativity capable of making us escape reality and bringing us to a place where differences are celebrated.

-

Blues, purples, reds and greens with nocturnal reflections accompany blacks with imperceptible nuances.



Avane dai colori notturni e tocchi perlarei.  
–  
Night-colored havana shades with pearlescent touches.



Amberfall | M49-Amberfall

CREATIVE CONTRAST

**Mazzucchelli**





Amberfall | M49-Amberfall

CREATIVE CONTRAST

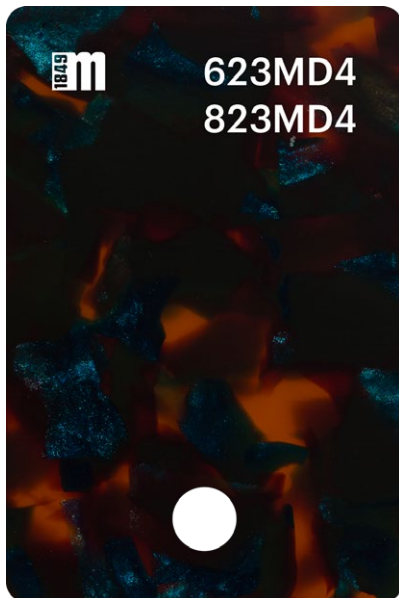
**M49** Mazzucchelli



Amberfall | M49-Amberfall

CREATIVE CONTRAST

**M49** Mazzucchelli



Front	Temple	Front	Temple	
623MD0	623MD0	823MD0	823MD0	maple red
623MD1	623MD1	823MD1	823MD1	lotus green
623MD2	623MD2	823MD2	823MD2	oak brown
623MD3	623MD3	823MD3	823MD3	pink water lily
623MD4	623MD4	823MD4	823MD4	orchid blue
623MD5	623MD5	823MD5	823MD5	lavander purple
<b>ITALY</b>		<b>ASIA</b>		

Method of production:	<b>Block</b>
Front size (mm):	<b>600 x 1400</b>
Temple size (mm):	<b>600 x 1400</b>
Front thickness (mm):	<b>Italy 8.0, 6.0 - Asia 6.0</b>
Temple thickness (mm):	<b>4.0</b>

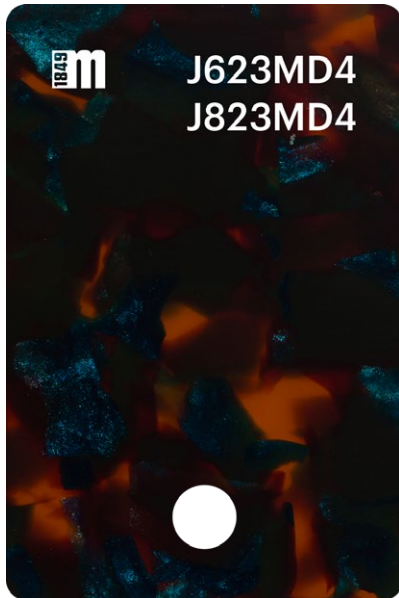
Tortoise/Nature

SILMO 2024

Amberfall

CREATIVE CONTRAST

**Mazzucchelli**



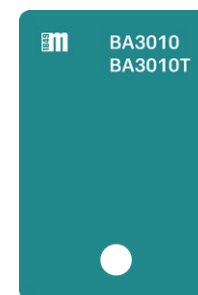
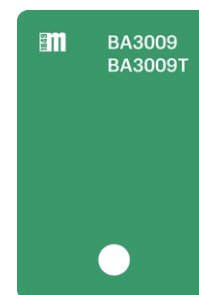
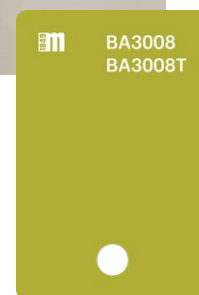
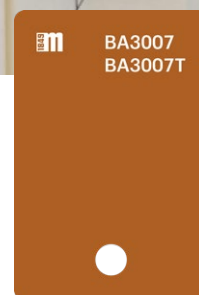
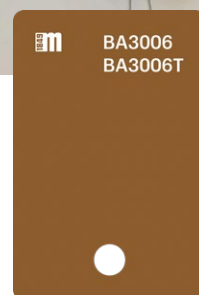
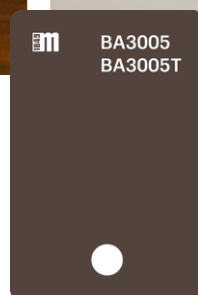
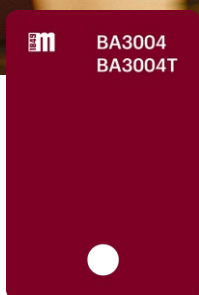
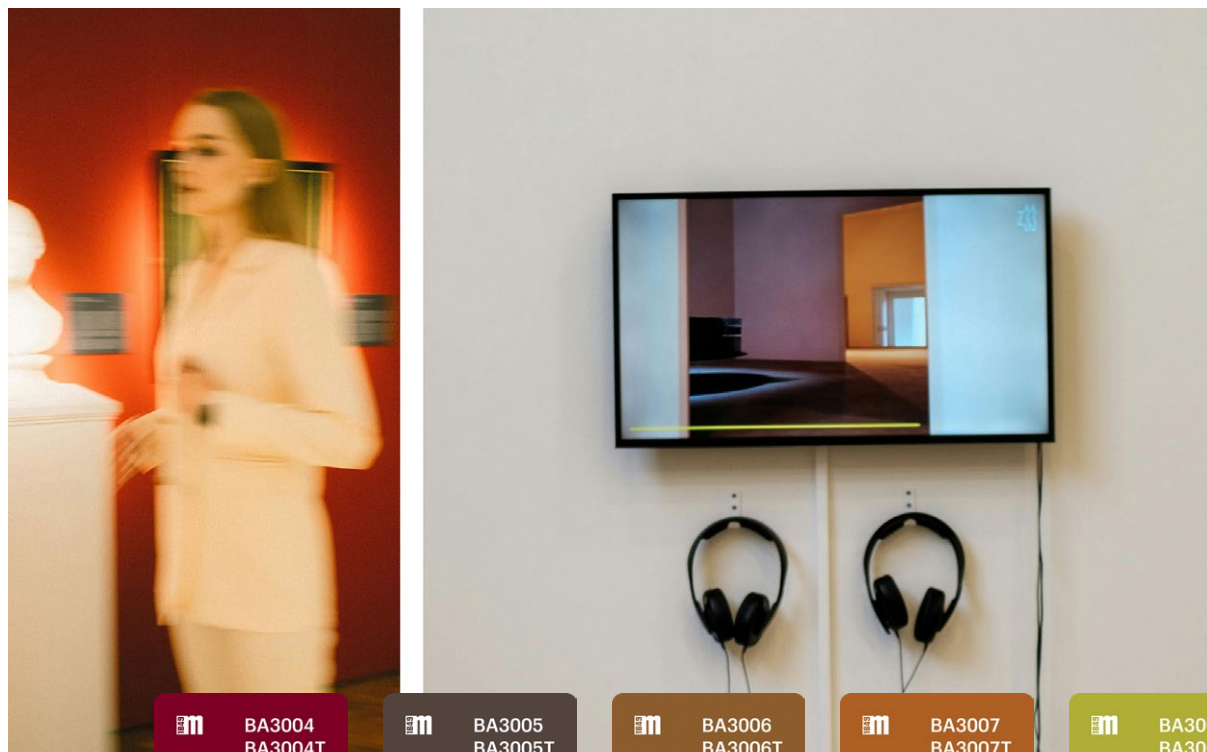
Front	Temple	Front	Temple	
J623MD0	J623MD0	J823MD0	J823MD0	maple red
J623MD1	J623MD1	J823MD1	J823MD1	lotus green
J623MD2	J623MD2	J823MD2	J823MD2	oak brown
J623MD3	J623MD3	J823MD3	J823MD3	pink water lily
J623MD4	J623MD4	J823MD4	J823MD4	orchid blue
J623MD5	J623MD5	J823MD5	J823MD5	lavander purple
<b>ITALY</b>		<b>ASIA</b>		

Method of production:	<b>Block</b>
Front size (mm):	<b>600 x 1400</b>
Temple size (mm):	<b>600 x 1400</b>
Front thickness (mm):	<b>Italy 8.0, 6.0 - Asia 6.0</b>
Temple thickness (mm):	<b>4.0</b>

Tortoise/Nature SILMO 2024

# M49-Amberfall

CREATIVE CONTRAST



Giochi di accostamenti tonali capaci di creare un effetto profondità.

–  
Tonal combinations that create a depth effect.



Gleam | M49-Gleam

CREATIVE CONTRAST

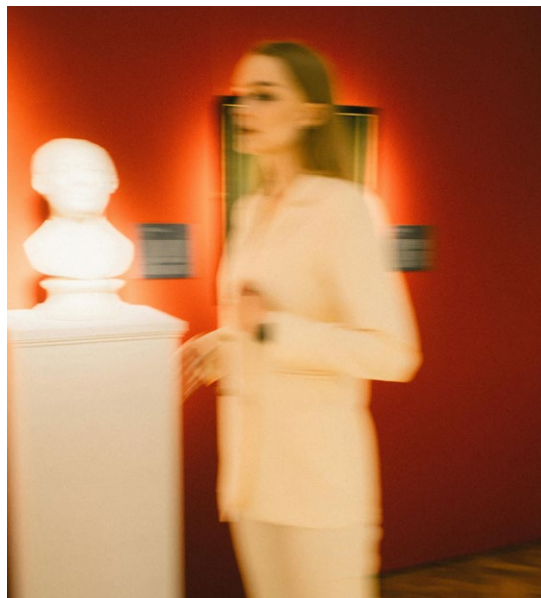
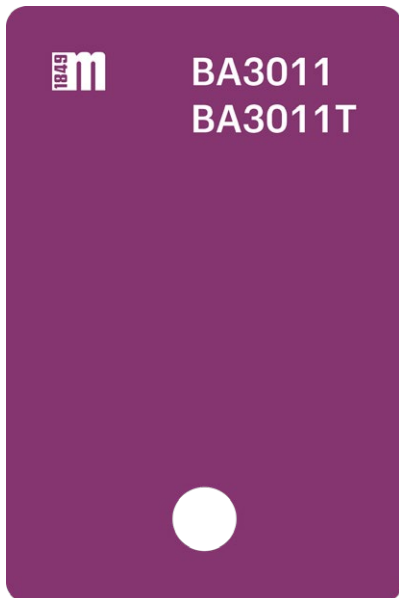
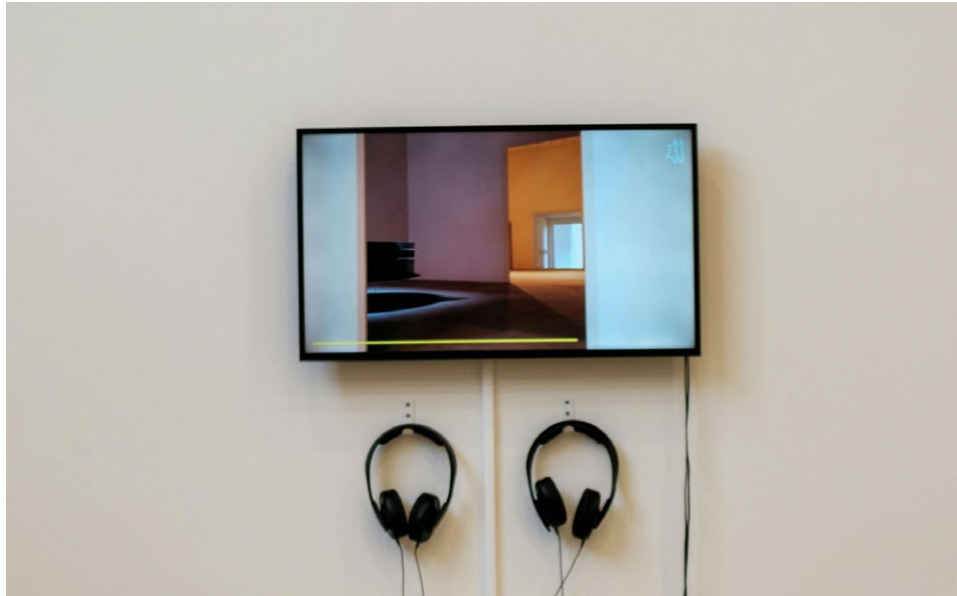
**M49** **Mazzucchelli**



Gleam | M49-Gleam

CREATIVE CONTRAST

**M49** **Mazzucchelli**



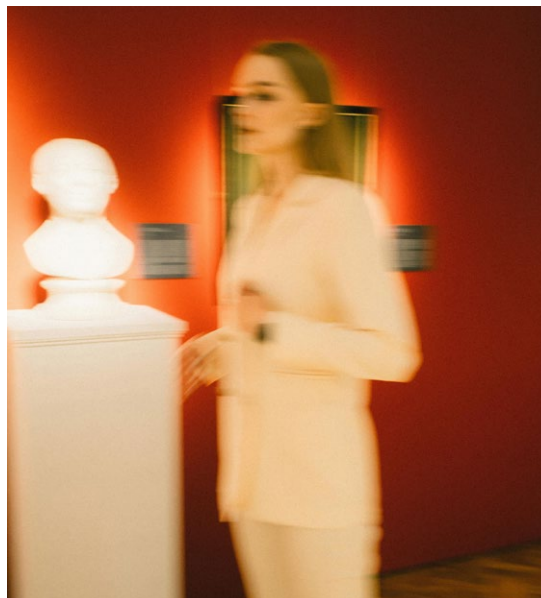
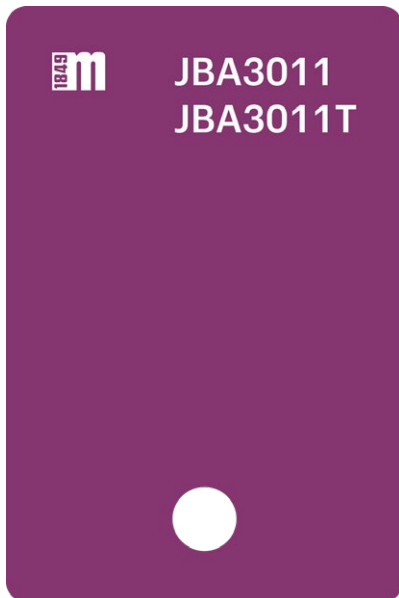
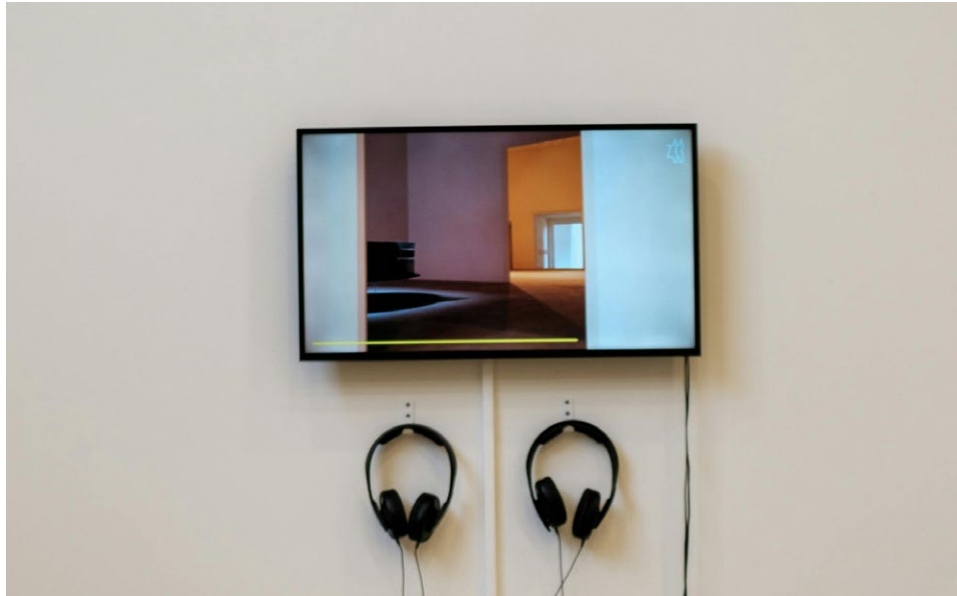
Front	Temple	Front	Temple	
BA3004	BA3004	BA3004T	BA3004T	cherry red
BA3005	BA3005	BA3005T	BA3005T	greysh taupe
BA3006	BA3006	BA3006T	BA3006T	camel brown
BA3007	BA3007	BA3007T	BA3007T	marigold yellow
BA3008	BA3008	BA3008T	BA3008T	chartreuse green
BA3009	BA3009	BA3009T	BA3009T	jade green
BA3010	BA3010	BA3010T	BA3010T	dusty turquoise
BA3011	BA3011	BA3011T	BA3011T	meadow mauve
<b>ITALY</b>		<b>ASIA</b>		

Method of production:	<b>Extrusion</b>
Front size (mm):	<b>170 x 1400</b>
Temple size (mm):	<b>170 x 1400</b>
Front thickness (mm):	<b>Italy 8.0, 6.0 - Asia 6.0</b>
Temple thickness (mm):	<b>4.0</b>

Multilayers

SILMO 2024





Front	Temple	Front	Temple	
JBA3004	JBA3004	JBA3004T	JBA3004T	cherry red
JBA3005	JBA3005	JBA3005T	JBA3005T	greysh taupe
JBA3006	JBA3006	JBA3006T	JBA3006T	camel brown
JBA3007	JBA3007	JBA3007T	JBA3007T	marigold yellow
JBA3008	JBA3008	JBA3008T	JBA3008T	chartreuse green
JBA3009	JBA3009	JBA3009T	JBA3009T	jade green
JBA3010	JBA3010	JBA3010T	JBA3010T	dusty turquoise
JBA3011	JBA3011	JBA3011T	JBA3011T	meadow mauve
<b>ITALY</b>		<b>ASIA</b>		

Method of production:	<b>Extrusion</b>
Front size (mm):	<b>170 x 1400</b>
Temple size (mm):	<b>170 x 1400</b>
Front thickness (mm):	<b>Italy 8.0, 6.0 - Asia 6.0</b>
Temple thickness (mm):	<b>4.0</b>

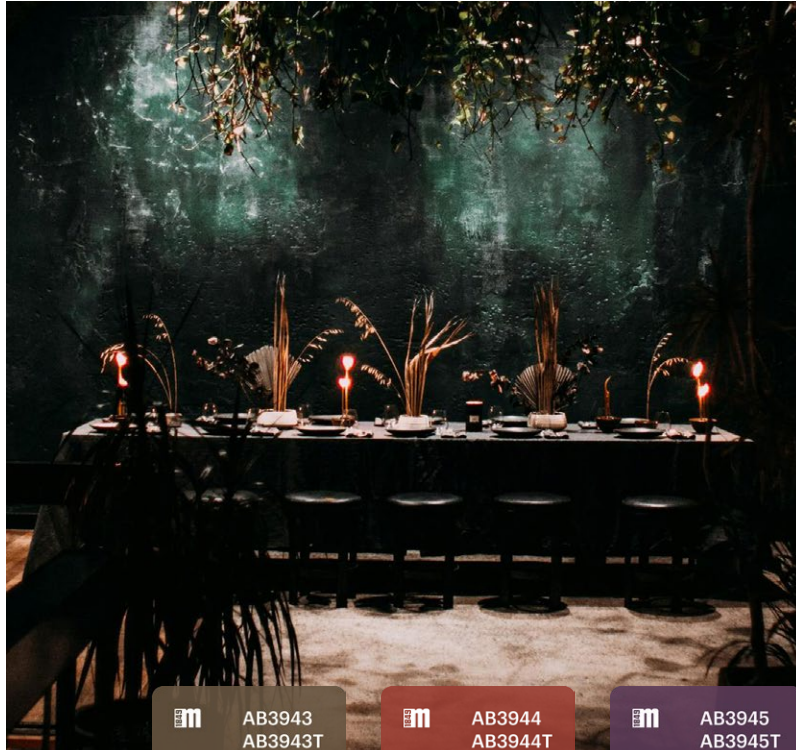
Multilayers

SILMO 2024

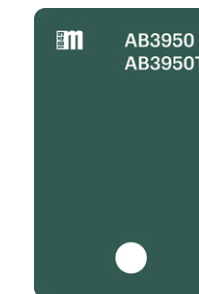
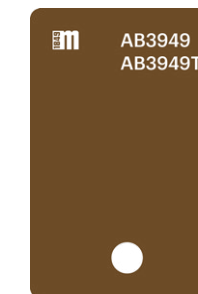
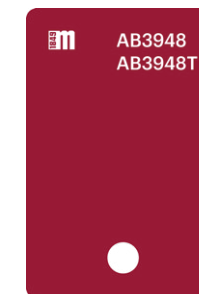
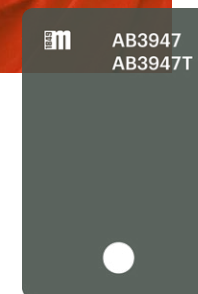
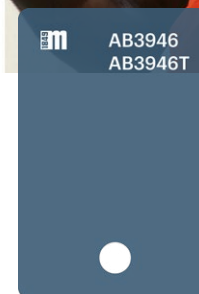
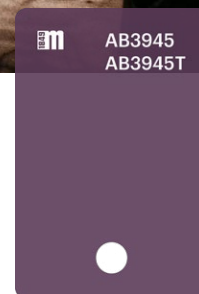
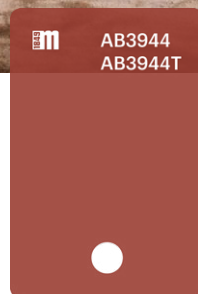
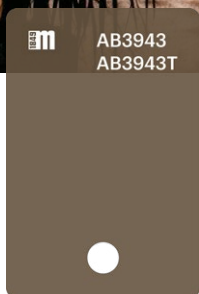
M49-Gleam

CREATIVE CONTRAST

**Mazzucchelli**



Toni trasparenti medi, versatili e senza tempo.  
–  
Medium, versatile and timeless transparent tones.



# Monocolors Silmo 2024 Transparent M49-Monocolors Silmo 2024 Transparent

CREATIVE CONTRAST



Monocolors Silmo 2024 Transparent  
M49-Monocolors Silmo 2024 Transparent

CREATIVE CONTRAST

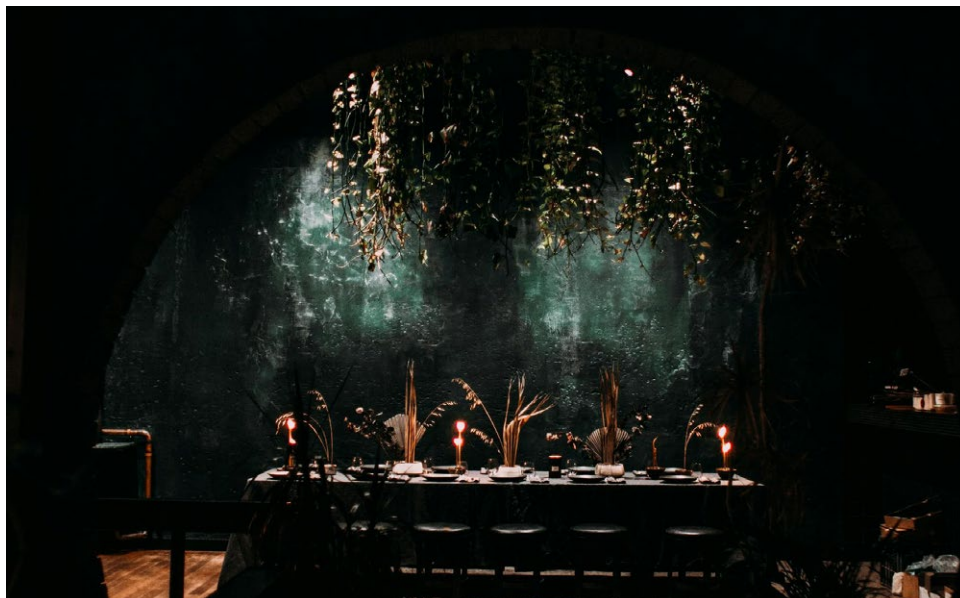
**Mazzucchelli**



Monocolors Silmo 2024 Transparent  
M49-Monocolors Silmo 2024 Transparent

CREATIVE CONTRAST

**Mazzucchelli**



**1849 m** AB3948  
AB3948T



Front	Temple	Front	Temple	
AB3943	AB3943	AB3943T	AB3943T	transparent mink brown
AB3944	AB3944	AB3944T	AB3944T	transparent arabesque orange
AB3945	AB3945	AB3945T	AB3945T	transparent purple verbana
AB3946	AB3946	AB3946T	AB3946T	transparent horizon blue
AB3947	AB3947	AB3947T	AB3947T	transparent moon grey
AB3948	AB3948	AB3948T	AB3948T	transparent true red
AB3949	AB3949	AB3949T	AB3949T	transparent toffee brown
AB3950	AB3950	AB3950T	AB3950T	transparent alpine green
<b>ITALY</b>		<b>ASIA</b>		

Method of production:	<b>Extrusion</b>
Front size (mm):	<b>Italy 630 x 1430 [6.0], 170 x 1400 [8.0, 6.0] – Asia 170 x 1400 [6.0], 185 x 1425 [5.0]</b>
Temple size (mm):	<b>Italy 630 x 1430 [4.0, 3.0], 170 x 1400 [4.0] – Asia 170 x 1400 [4.0], 185 x 1425 [3.0]</b>
Front thickness (mm):	<b>Italy 8.0, 6.0 – Asia 6.0, 5.0</b>
Temple thickness (mm):	<b>Italy 4.0, 3.0 – Asia 4.0, 3.0</b>

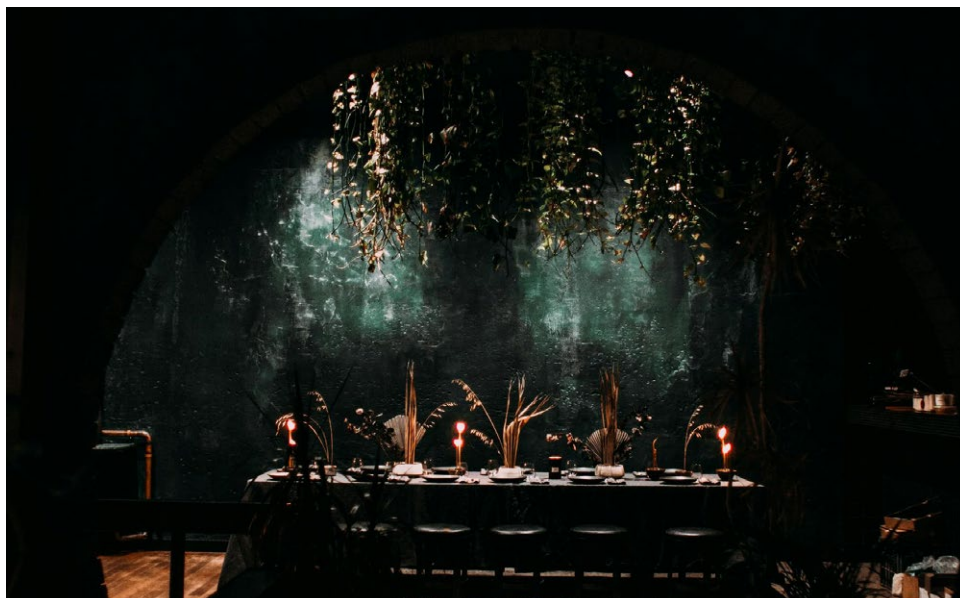
Mono Transparent #monocolorcase

SILMO 2024

# Monocolors Silmo 2024 Transparent

CREATIVE CONTRAST

**1849 Mazzucchelli**



**1849 m** JAB3948  
JAB3948T



Front	Temple	Front	Temple	
JAB3943	JAB3943	JAB3943T	JAB3943T	transparent mink brown
JAB3944	JAB3944	JAB3944T	JAB3944T	transparent arabesque orange
JAB3945	JAB3945	JAB3945T	JAB3945T	transparent purple verbana
JAB3946	JAB3946	JAB3946T	JAB3946T	transparent horizon blue
JAB3947	JAB3947	JAB3947T	JAB3947T	transparent moon grey
JAB3948	JAB3948	JAB3948T	JAB3948T	transparent true red
JAB3949	JAB3949	JAB3949T	JAB3949T	transparent toffee brown
JAB3950	JAB3950	JAB3950T	JAB3950T	transparent alpine green
<b>ITALY</b>		<b>ASIA</b>		

Method of production: **Extrusion**

Front size (mm):	<b>Italy 630 x 1430 [6.0], 170 x 1400 [8.0, 6.0] – Asia 170 x 1400 [6.0], 185 x 1425 [5.0]</b>
Temple size (mm):	<b>Italy 630 x 1430 [4.0, 3.0], 170 x 1400 [4.0] – Asia 170 x 1400 [4.0], 185 x 1425 [3.0]</b>
Front thickness (mm):	<b>Italy 8.0, 6.0 – Asia 6.0, 5.0</b>
Temple thickness (mm):	<b>Italy 4.0, 3.0 – Asia 4.0, 3.0</b>

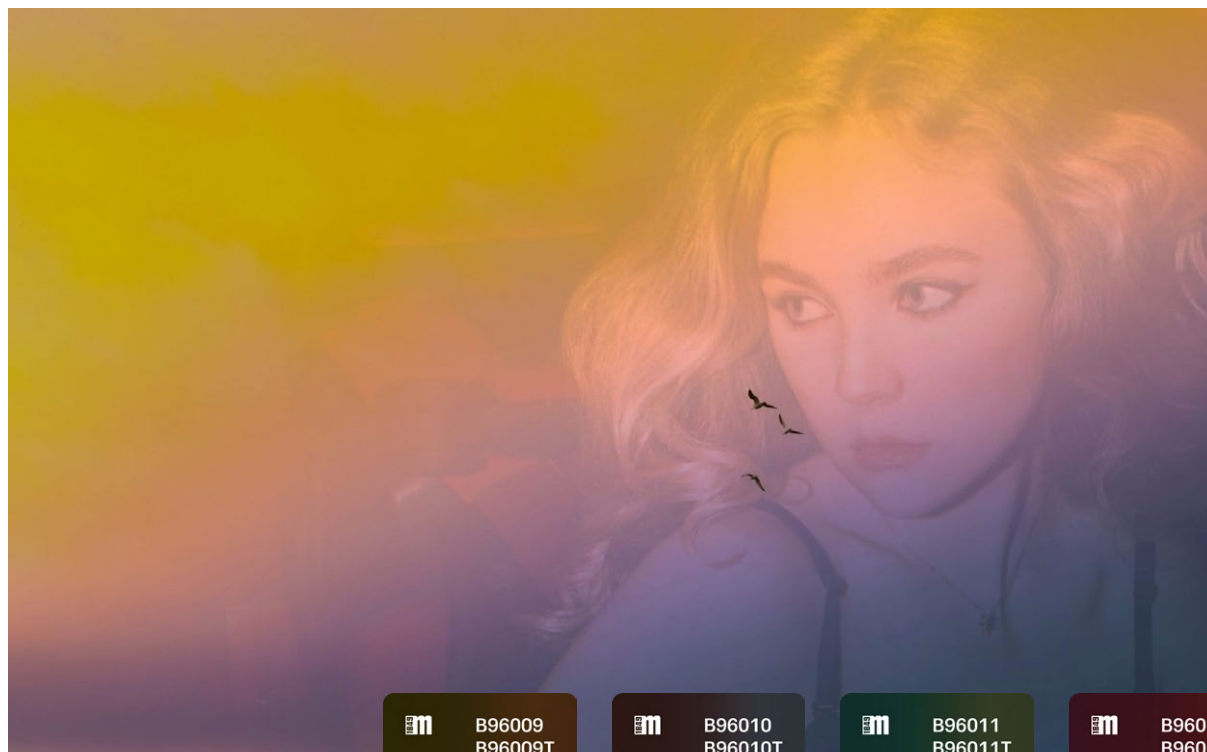
Mono Transparent #monocolorcase

SILMO 2024

# M49-Monocolors Silmo 2024 Transparent

CREATIVE CONTRAST

**1849 Mazzucchelli**



Morbide sfumature cambiano aspetto grazie a top scuri trasparenti.

–  
Soft shades change appearance thanks to dark transparent tops.



Quietly | M49-Quietly

CREATIVE CONTRAST

1646 **Mazzucchelli**



Quietly | M49-Quietly

CREATIVE CONTRAST

**Mazzucchelli**

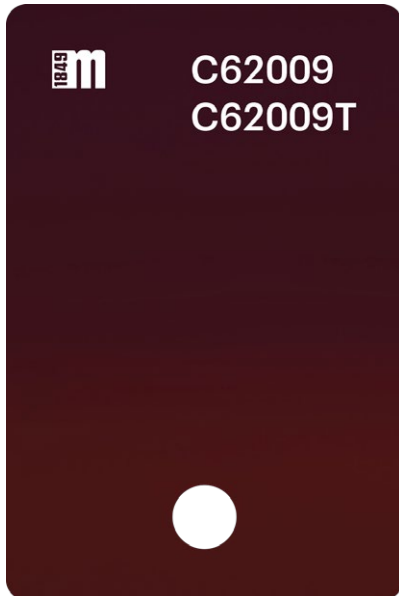




Quietly | M49-Quietly

CREATIVE CONTRAST

**Mazzucchelli**

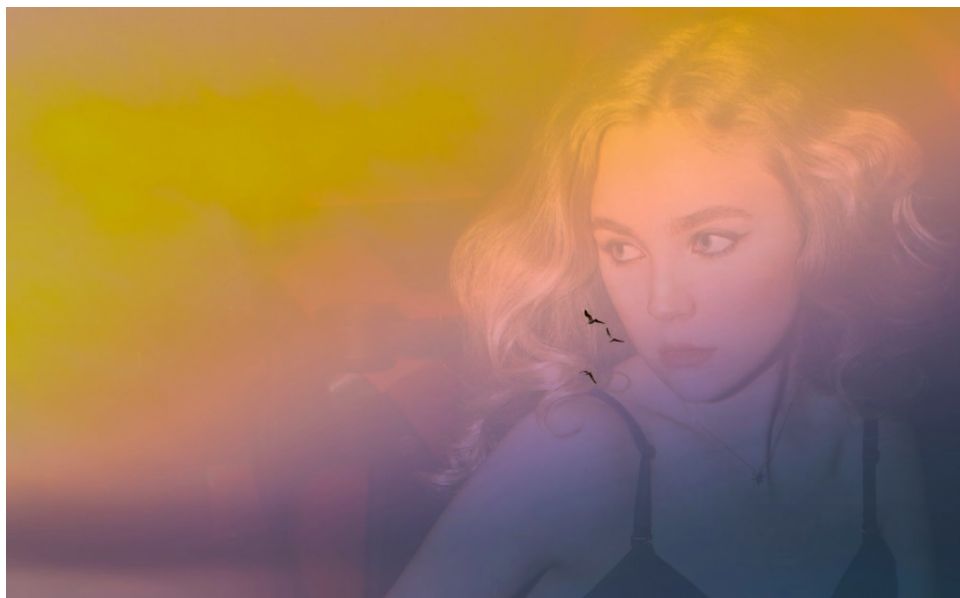


Front	Temple	Front	Temple	
C62006	B96009	C62006T	B96009T	olive/peach
C62007	B96010	C62007T	B96010T	indigo/terracotta
C62008	B96011	C62008T	B96011T	greenish grey/teal
C62009	B96012	C62009T	B96012T	burgundy/purple
C62010	B96013	C62010T	B96013T	anthracite/pink
<b>ITALY</b>		<b>ASIA</b>		

Method of production:	<b>Extrusion</b>
Front size (mm):	<b>170 x 1400</b>
Temple size (mm):	<b>170 x 1400</b>
Front thickness (mm):	<b>Italy 8.0, 6.0 - Asia 6.0</b>
Temple thickness (mm):	<b>4.0</b>

Gradient/Multicolor

SILMO 2024



**1849 m** JC62009  
JC62009T



Front	Temple	Front	Temple	
JC62006	JB96009	JC62006T	JB96009T	olive/peach
JC62007	JB96010	JC62007T	JB96010T	indigo/terracotta
JC62008	JB96011	JC62008T	JB96011T	greenish grey/teal
JC62009	JB96012	JC62009T	JB96012T	burgundy/purple
JC62010	JB96013	JC62010T	JB96013T	anthracite/pink
<b>ITALY</b>		<b>ASIA</b>		

Method of production: **Extrusion**

Front size (mm): **170 x 1400**

Temple size (mm): **170 x 1400**

Front thickness (mm): **Italy 8.0, 6.0 - Asia 6.0**

Temple thickness (mm): **4.0**

Gradient/Multicolor

SILMO 2024

M49-Quietly

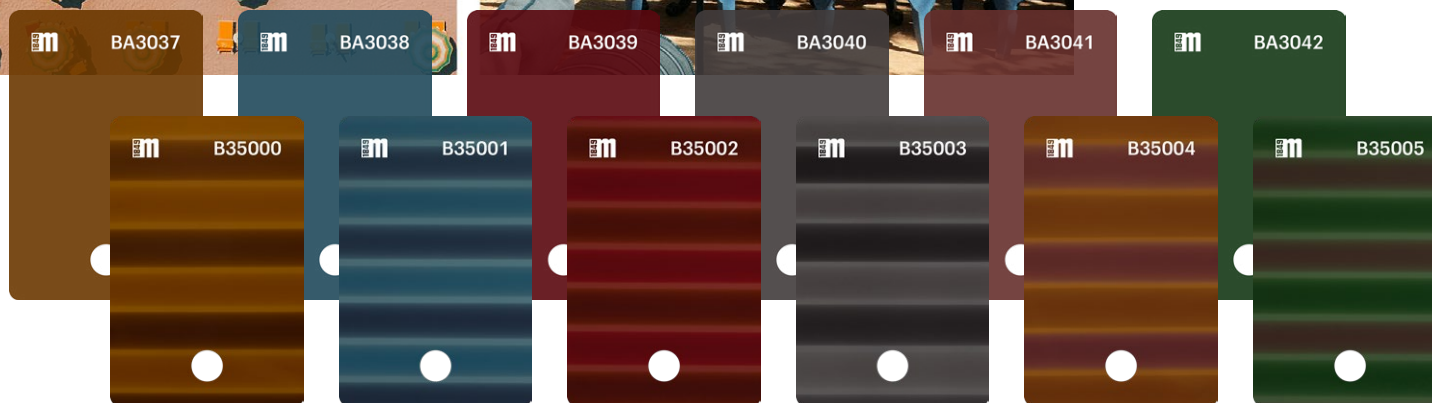
CREATIVE CONTRAST

**1849** Mazzucchelli



Un effetto rigato dal richiamo vintage.

–  
A striped effect with a vintage appeal.



Riviera | M49-Riviera

CREATIVE CONTRAST

**Mazzucchelli**



Riviera | M49-Riviera

CREATIVE CONTRAST

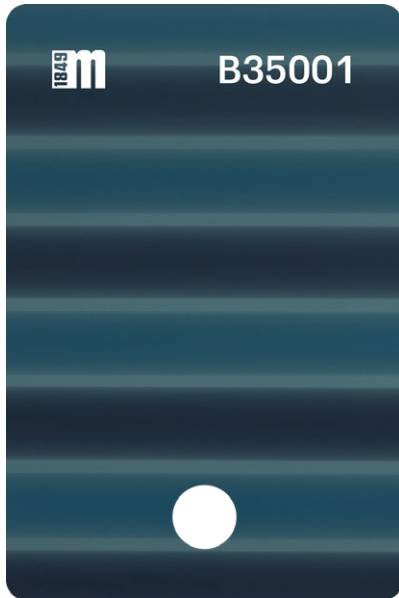
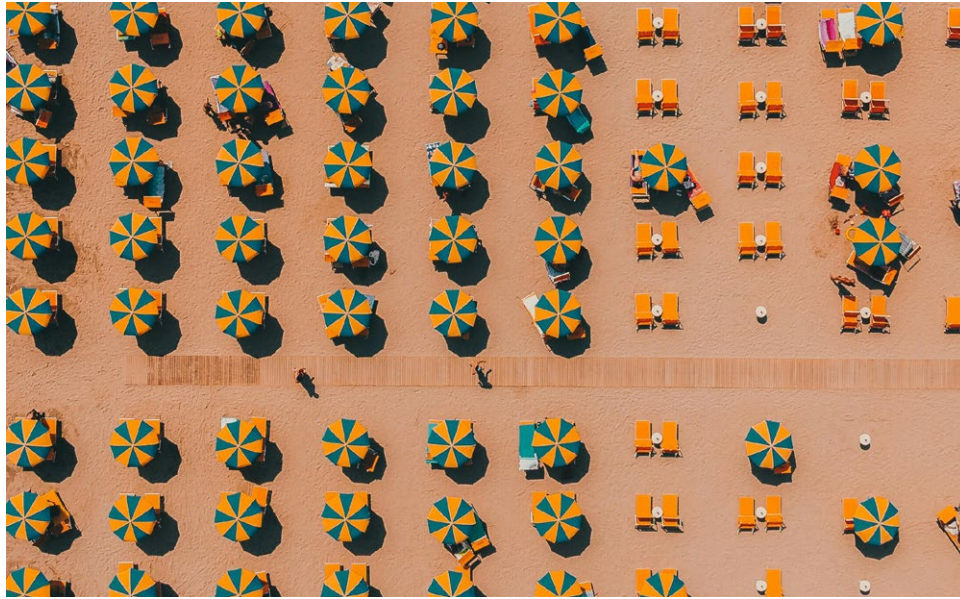
**Mazzucchelli**



Riviera | M49-Riviera

CREATIVE CONTRAST

**M49** Mazzucchelli



Front	Temple	
B35000	BA3037	sequoia/honey gold
B35001	BA3038	true navy/sky blue
B35002	BA3039	tibetan red/tomato
B35003	BA3040	pirate black/frost grey
B35004	BA3041	caramel/begonia pink
B35005	BA3042	evergreen/dahlia mauve

**ITALY**

Method of production: **Extrusion**

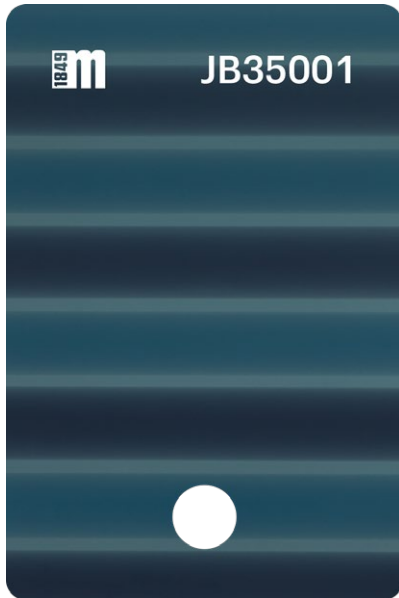
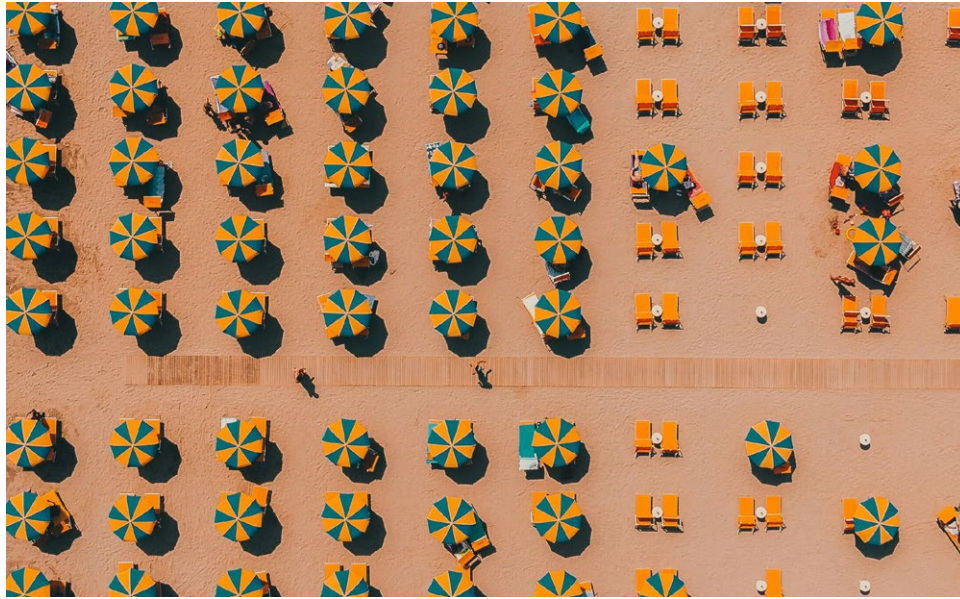
Front size (mm): **170 x 1400**

Temple size (mm): **170 x 1400**

Front thickness (mm): **8.0, 6.0**

Temple thickness (mm): **4.0**

Geometric & Graphic/Multilayers **SILMO 2024**



Front	Temple	
JB35000	JBA3037	sequoia/honey gold
JB35001	JBA3038	true navy/sky blue
JB35002	JBA3039	tibetan red/tomato
JB35003	JBA3040	pirate black/frost grey
JB35004	JBA3041	caramel/begonia pink
JB35005	JBA3042	evergreen/dahlia mauve

**ITALY**

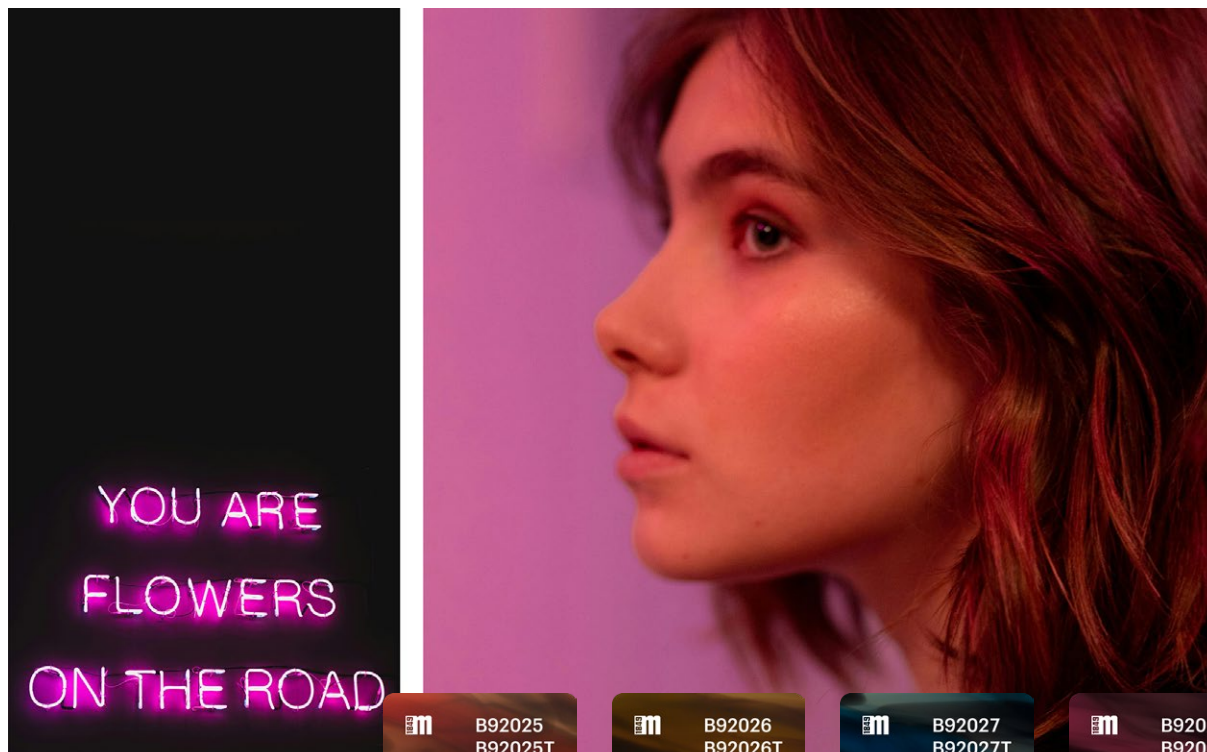
Method of production:	<b>Extrusion</b>
Front size (mm):	<b>170 x 1400</b>
Temple size (mm):	<b>170 x 1400</b>
Front thickness (mm):	<b>8.0, 6.0</b>
Temple thickness (mm):	<b>4.0</b>

Geometric & Graphic/Multilayers **SILMO 2024**

# M49-Riviera

CREATIVE CONTRAST





Vibrazioni di colore che si fondono con pennellate di toni scuri.

–  
Color vibrations blending with strokes of dark tones.

Sublime | M49-Sublime

CREATIVE CONTRAST

**Mazzucchelli**



Sublime | M49-Sublime

CREATIVE CONTRAST

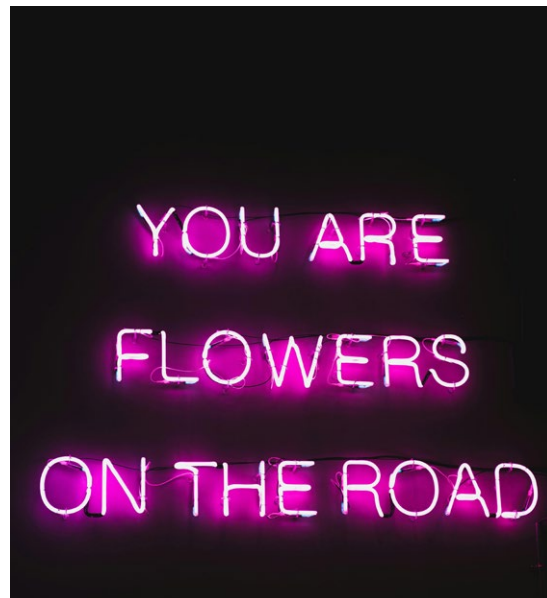
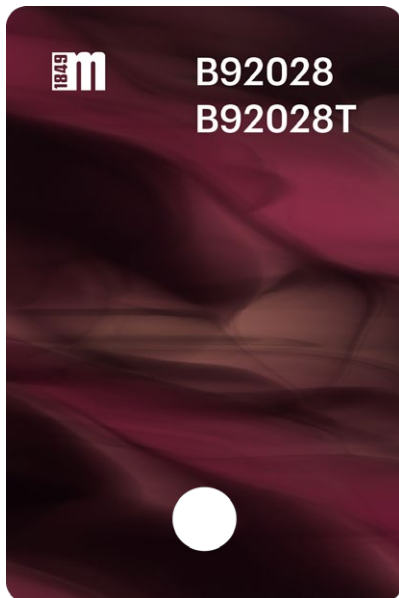
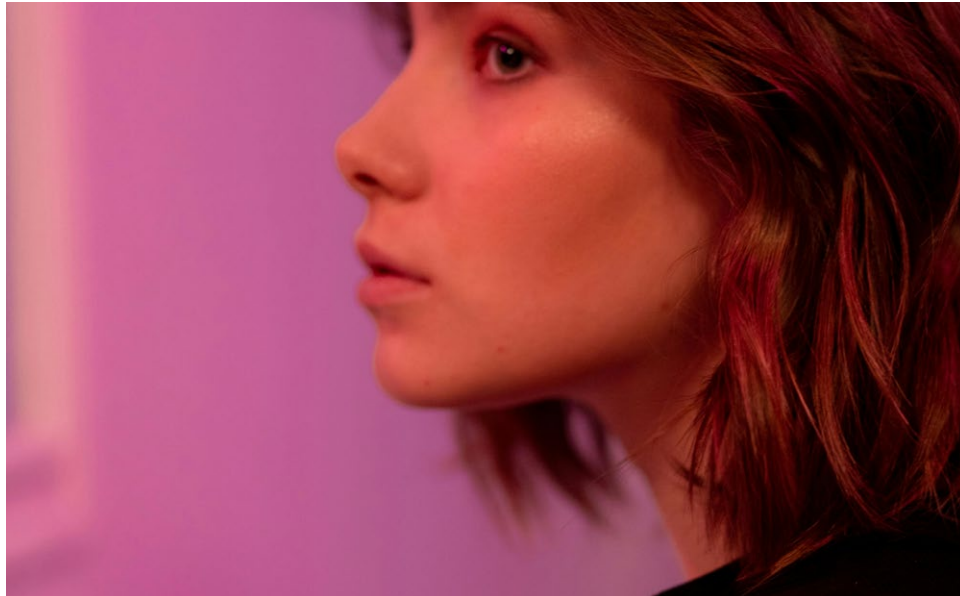
**Mazzucchelli**



Sublime | M49-Sublime

CREATIVE CONTRAST

**Mazzucchelli**

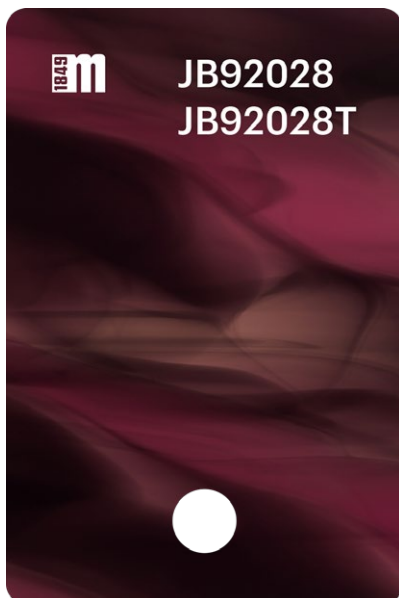
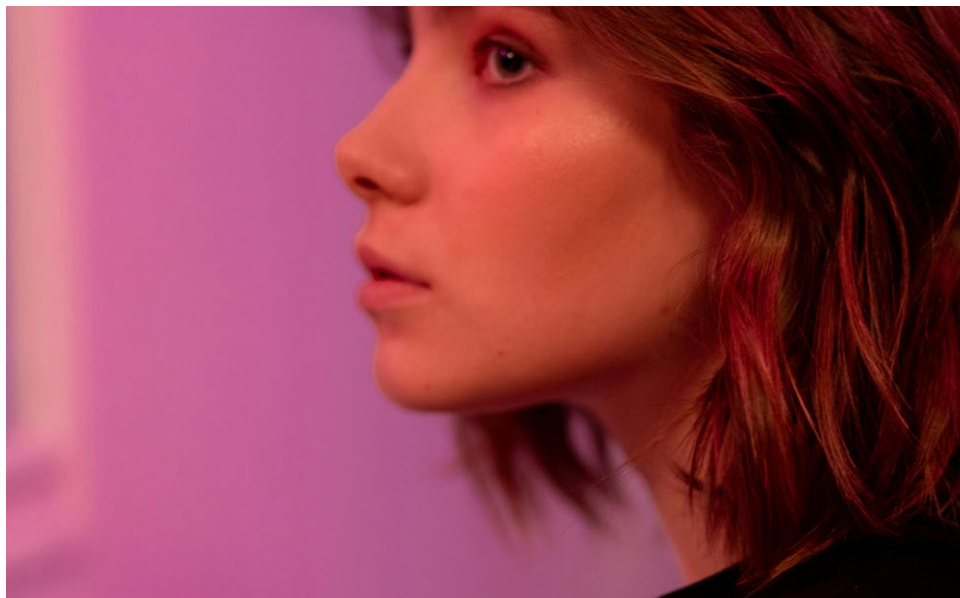


Front	Temple	Front	Temple	
B92025	B92025	B92025T	B92025T	orange rust
B92026	B92026	B92026T	B92026T	honey yellow
B92027	B92027	B92027T	B92027T	federal blue
B92028	B92028	B92028T	B92028T	fuchsia rose
B92029	B92029	B92029T	B92029T	green olive
<b>ITALY</b>		<b>ASIA</b>		

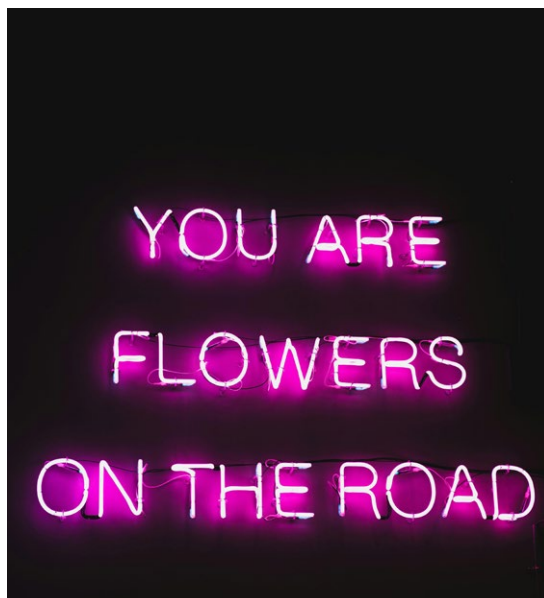
Method of production:	<b>Extrusion</b>
Front size (mm):	<b>210 x 1400</b>
Temple size (mm):	<b>210 x 1400</b>
Front thickness (mm):	<b>Italy 8.0, 6.0 - Asia 6.0</b>
Temple thickness (mm):	<b>4.0</b>

Multicolor/Nature

SILMO 2024



JB92028  
JB92028T



Front	Temple	Front	Temple	
JB92025	JB92025	JB92025T	JB92025T	orange rust
JB92026	JB92026	JB92026T	JB92026T	honey yellow
JB92027	JB92027	JB92027T	JB92027T	federal blue
JB92028	JB92028	JB92028T	JB92028T	fuchsia rose
JB92029	JB92029	JB92029T	JB92029T	green olive
<b>ITALY</b>		<b>ASIA</b>		

Method of production: **Extrusion**

Front size (mm): **210 x 1400**

Temple size (mm): **210 x 1400**

Front thickness (mm): **Italy 8.0, 6.0 - Asia 6.0**

Temple thickness (mm): **4.0**

Multicolor/Nature

SILMO 2024

M49-Sublime

CREATIVE CONTRAST

**Mazzucchelli**



Feel Good

FEEL GOOD

La gioia e la nostalgia non sono altro che un cuscino nei confronti della realtà.

Sentimenti che si rispecchiano in prudenti toni brillanti da un lato, e colori dall'aura calma che richiamano i pastelli dall'altro. Bagliori di gioia influenzano la nostra immaginazione lasciando spazio a riferimenti fantastici e alla scelta di prodotti che influenzano il nostro sentirci bene.

Un romanticismo di nuova generazione fa da sfondo a questo tema e un look femminile, che è sinonimo di sicurezza, si riflette sulla scelta dei colori e delle finiture.

Toni pastello che richiamano tempi passati, si risvegliano fino a toccare punte di colore più vive e inaspettate.

-

I cammello, i rosa, i malva si accompagnano bene all'arancio, al grigio gesso fino ad arrivare al giallo.

FEEL GOOD

Joy and nostalgia are nothing more than a cushion against reality.

Emotions reflected in cautious bright tones on one side and calm hues reminiscent of pastels on the other.

Flashes of joy influence our imagination, leaving room for fantastical references and the choice of products that make us feel good.

A new generation of romanticism sets the backdrop for this theme and a feminine look, synonymous with confidence, is reflected in the choice of colors and finishes.

Pastel tones that evoke times gone by awaken to reach more vibrant and unexpected shades.

-

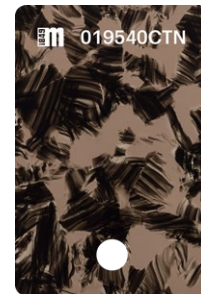
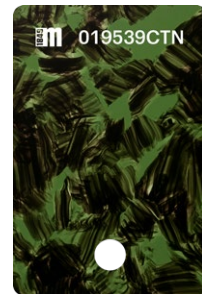
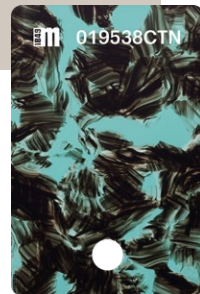
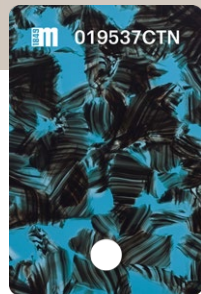
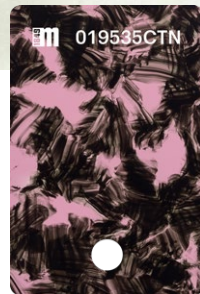
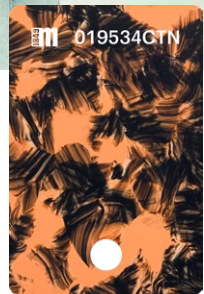
Camel, pink and mauve pair well with orange, chalk grey and even yellow.



# DOUBT

La semplicità di leggeri colori trasparenti, arricchiti da tocchi di nero.

–  
The simplicity of light transparent colors, enriched with touches of black.



Freedom | M49-Freedom

FEEL GOOD

**Mazzucchelli**





Freedom | M49-Freedom

FEEL GOOD

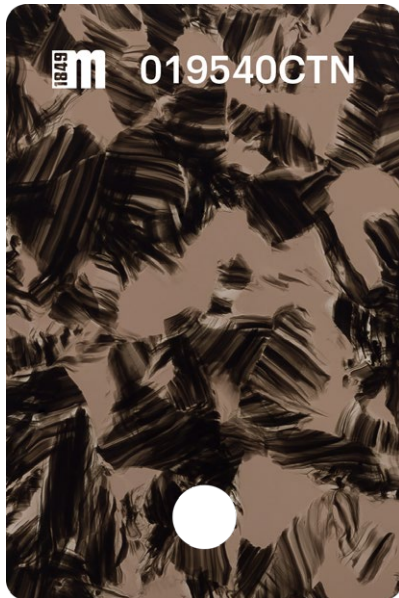
**Mazzucchelli**



Freedom | M49-Freedom

FEEL GOOD

**Mazzucchelli**



**1645** 019540CTN



Front	Temple	
019534CTN	019534CTN	delicate apricot
019535CTN	019535CTN	soft pink
019536CTN	019536CTN	quiet mauve
019537CTN	019537CTN	calm blue
019538CTN	019538CTN	aquamarine blue
019539CTN	019539CTN	wood green
019540CTN	019540CTN	taupe beige

**ASIA**

Method of production: **Tecblock**

Front size (mm): **320 x 360**

Temple size (mm): **320 x 360**

Front thickness (mm): **6.0**

Temple thickness (mm): **4.0**

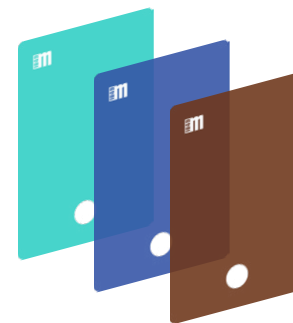
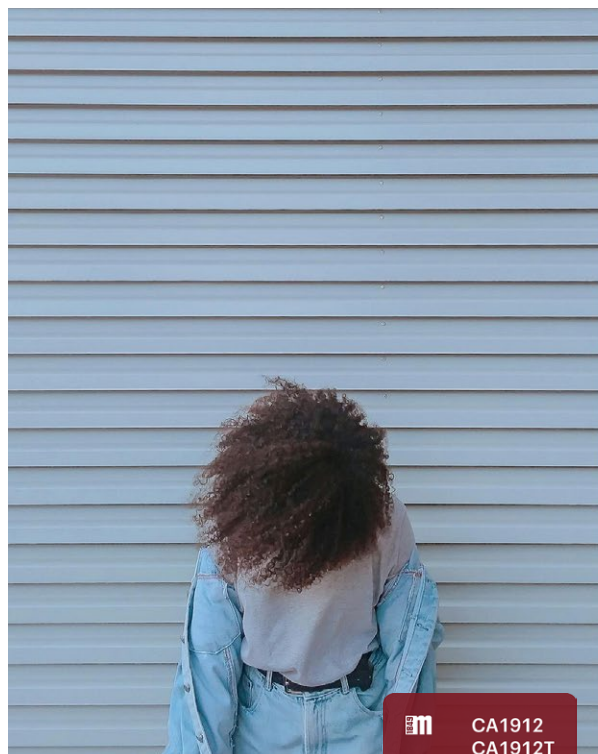
Nature

SILMO 2024

Freedom

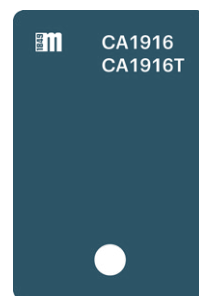
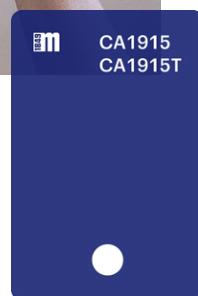
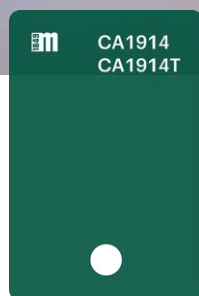
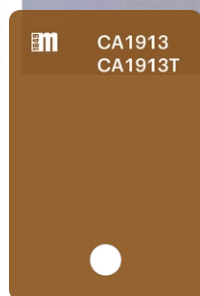
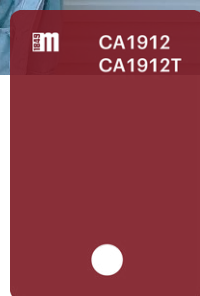
FEEL GOOD

**1645** Mazzucchelli



Lamine trasparenti sovrapposte creano divertenti giochi di abbinamenti colore.

–  
Overlapping transparent sheets create playful color combinations.





Funfair | M49-Funfair

FEEL GOOD

**M49** **Mazzucchelli**





Funfair | M49-Funfair

FEEL GOOD

**M49** **Mazzucchelli**




**CA1916**  
**CA1916T**





Front	Temple	Front	Temple	
CA1912	CA1912	CA1912T	CA1912T	orange zest
CA1913	CA1913	CA1913T	CA1913T	mustard yellow
CA1914	CA1914	CA1914T	CA1914T	emerald green
CA1915	CA1915	CA1915T	CA1915T	electric blue
CA1916	CA1916	CA1916T	CA1916T	petrol green
<b>ITALY</b>		<b>ASIA</b>		


Method of production:	<b>Extrusion</b>
Front size (mm):	<b>170 x 1400</b>
Temple size (mm):	<b>170 x 1400</b>
Front thickness (mm):	<b>Italy 8.0, 6.0 - Asia 6.0</b>
Temple thickness (mm):	<b>4.0</b>

Multilayers

SILMO 2024




**CA1916**  
**CA1916T**




Front	Temple	Front	Temple	
JCA1912	JCA1912	JCA1912T	JCA1912T	orange zest
JCA1913	JCA1913	JCA1913T	JCA1913T	mustard yellow
JCA1914	JCA1914	JCA1914T	JCA1914T	emerald green
JCA1915	JCA1915	JCA1915T	JCA1915T	electric blue
JCA1916	JCA1916	JCA1916T	JCA1916T	petrol green
<b>ITALY</b>		<b>ASIA</b>		

Method of production:	<b>Extrusion</b>
Front size (mm):	<b>170 x 1400</b>
Temple size (mm):	<b>170 x 1400</b>
Front thickness (mm):	<b>Italy 8.0, 6.0 - Asia 6.0</b>
Temple thickness (mm):	<b>4.0</b>

Multilayers SILMO 2024

M49-Funfair

FEEL GOOD

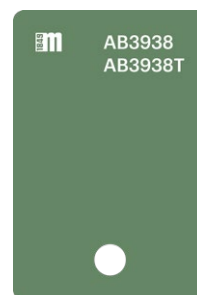
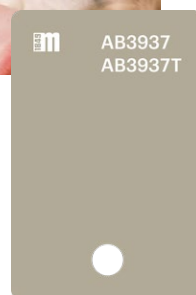
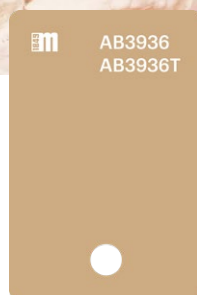
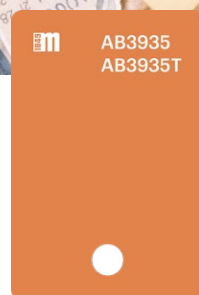
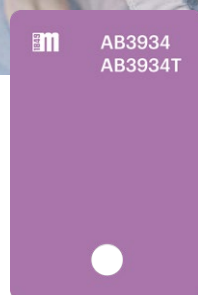
 **Mazucchelli**





Toni che rispecchiano un romanticismo di nuova generazione.

–  
Tones that reflect a new generation of romanticism.



Monocolors Silmo 2024 Light Solid  
M49-Monocolors Silmo 2024 Light Solid

FEEL GOOD

**Mazzucchelli**



Monocolors Silmo 2024 Light Solid  
M49-Monocolors Silmo 2024 Light Solid

FEEL GOOD

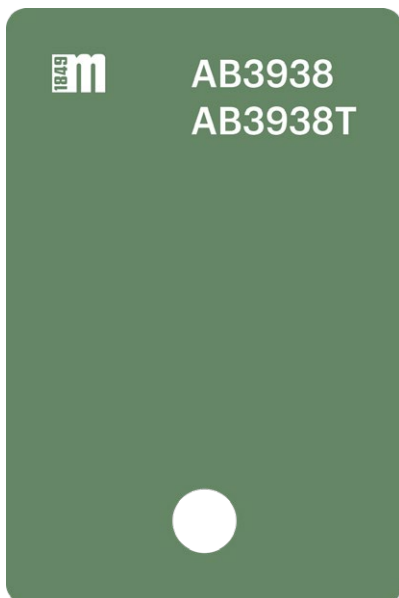
**Mazzucchelli**



Monocolors Silmo 2024 Light Solid  
M49-Monocolors Silmo 2024 Light Solid

FEEL GOOD

**Mazzucchelli**



Front	Temple	Front	Temple	
AB3934	AB3934	AB3934T	AB3934T	solid lavender
AB3935	AB3935	AB3935T	AB3935T	solid tangerine
AB3936	AB3936	AB3936T	AB3936T	solid peanut
AB3937	AB3937	AB3937T	AB3937T	solid grey
AB3938	AB3938	AB3938T	AB3938T	solid green
<b>ITALY</b>		<b>ASIA</b>		

Method of production:	<b>Extrusion</b>
Front size (mm):	<b>Italy 630 x 1430 [6.0], 170 x 1400 [8.0, 6.0] - Asia 170 x 1400 [6.0], 185 x 1425 [5.0]</b>
Temple size (mm):	<b>Italy 630 x 1430 [4.0, 3.0], 170 x 1400 [4.0] - Asia 170 x 1400 [4.0], 185 x 1425 [3.0]</b>
Front thickness (mm):	<b>Italy 8.0, 6.0 - Asia 6.0, 5.0</b>
Temple thickness (mm):	<b>Italy 4.0, 3.0 - Asia 4.0, 3.0</b>

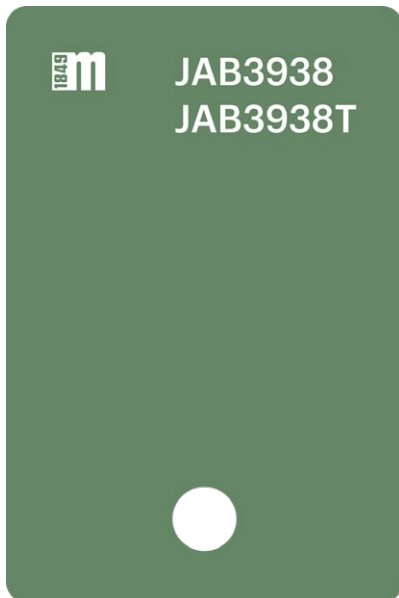
Mono Solid #monocolorcase

SILMO 2024

# Monocolors Silmo 2024 Light Solid

FEEL GOOD

1849 **Mazzucchelli**



Front	Temple	Front	Temple	
JAB3934	JAB3934	JAB3934T	JAB3934T	solid lavender
JAB3935	JAB3935	JAB3935T	JAB3935T	solid tangerine
JAB3936	JAB3936	JAB3936T	JAB3936T	solid peanut
JAB3937	JAB3937	JAB3937T	JAB3937T	solid grey
JAB3938	JAB3938	JAB3938T	JAB3938T	solid green
<b>ITALY</b>		<b>ASIA</b>		

Method of production:	<b>Extrusion</b>
Front size (mm):	<b>Italy 630 x 1430 [6.0], 170 x 1400 [8.0, 6.0] - Asia 170 x 1400 [6.0], 185 x 1425 [5.0]</b>
Temple size (mm):	<b>Italy 630 x 1430 [4.0, 3.0], 170 x 1400 [4.0] - Asia 170 x 1400 [4.0], 185 x 1425 [3.0]</b>
Front thickness (mm):	<b>Italy 8.0, 6.0 - Asia 6.0, 5.0</b>
Temple thickness (mm):	<b>Italy 4.0, 3.0 - Asia 4.0, 3.0</b>

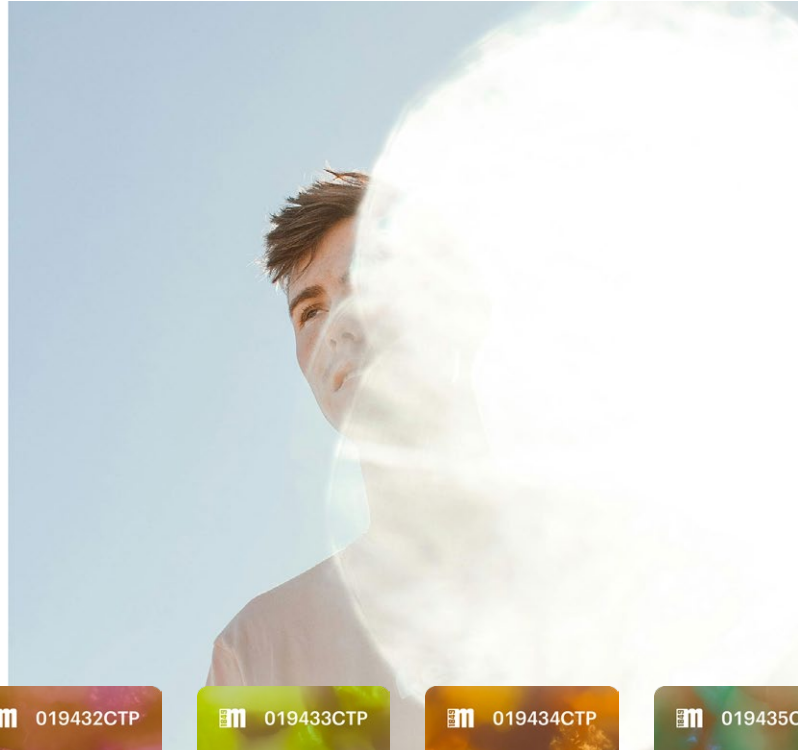
Mono Solid #monocolorcase

SILMO 2024

# M49-Monocolors Silmo 2024 Light Solid

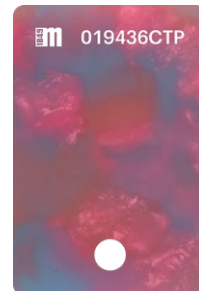
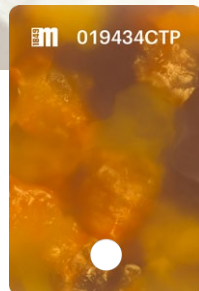
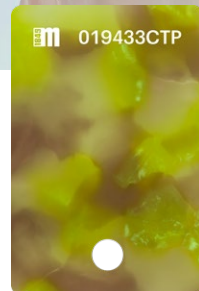
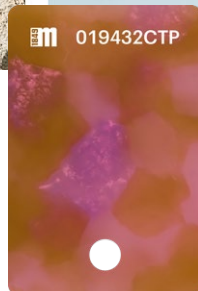
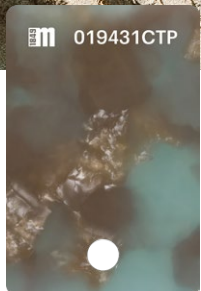
FEEL GOOD

1849 **Mazzucchelli**



Avane dai toni accesi e inaspettati, arricchite da leggeri movimenti di perla.

–  
Bright and unexpected hues of havana, enriched with subtle pearl movements.



# Neon Dreams

FEEL GOOD

**Mazzucchelli**



Neon Dreams

FEEL GOOD

**Mazzucchelli**

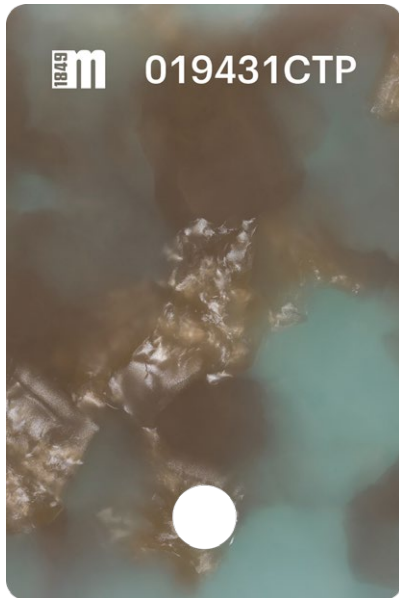


Neon Dreams

FEEL GOOD

**Mazzucchelli**





Front	Temple	
019431CTP	019431CTP	celestial blue
019432CTP	019432CTP	fluoro pink
019433CTP	019433CTP	electric lime
019434CTP	019434CTP	neon mint
019435CTP	019435CTP	solar yellow
019436CTP	019436CTP	vibrant orchid

**ASIA**

Method of production:	<b>Tecblock</b>
Front size (mm):	<b>320 x 360</b>
Temple size (mm):	<b>320 x 360</b>
Front thickness (mm):	<b>6.0</b>
Temple thickness (mm):	<b>4.0</b>

Pearl & Glitter/Multicolor

SILMO 2024

Neon Dreams

FEEL GOOD

**1849** Mazzucchelli

**18719** **Mazzucchelli**